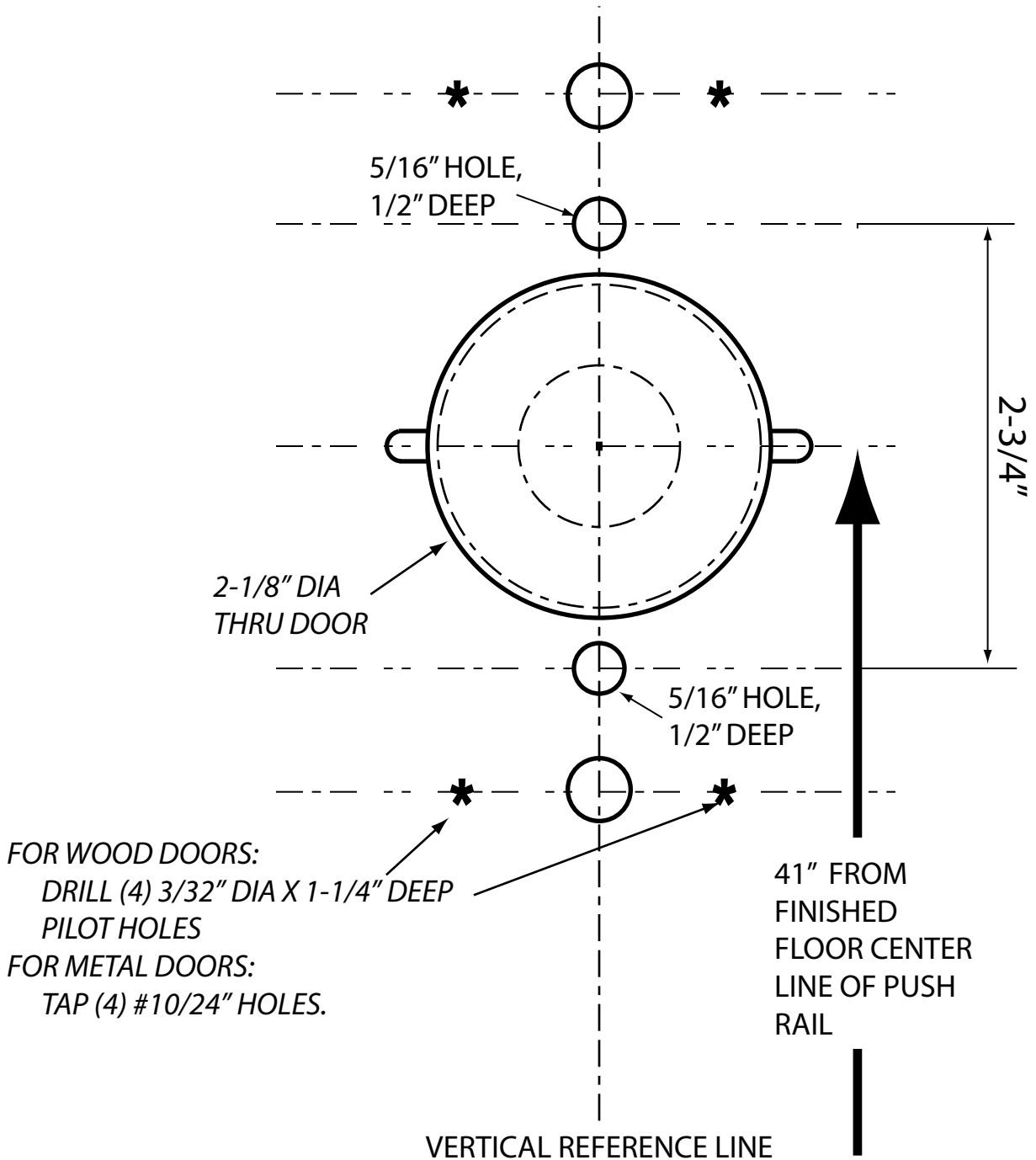
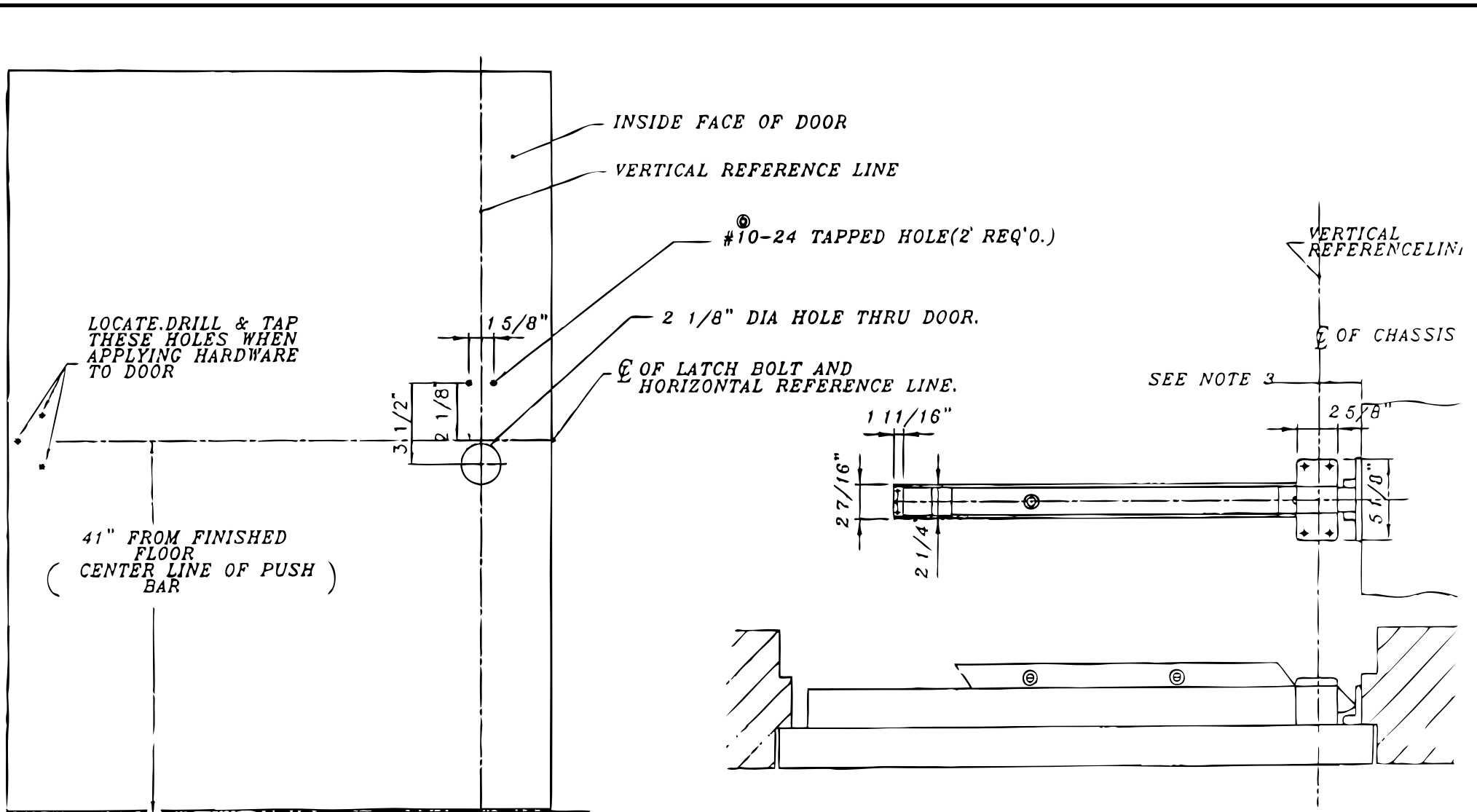




FOR F2260V SERIES VERTICAL ROD EXIT DEVICE  
F2260V SERIES VERTICAL ROD TYPE EXIT DEVICE  
USING ENT-00L OR STR-05L PAS-30L LEVER  
HANDLE TRIM





LOCATE, DRILL & TAP THESE HOLES WHEN APPLYING HARDWARE TO DOOR

INSIDE FACE OF DOOR

VERTICAL REFERENCE LINE

⑥ #10-24 TAPPED HOLE (2' REQ'0.)

2 1/8" DIA HOLE THRU DOOR.

Ⓞ OF LATCH BOLT AND HORIZONTAL REFERENCE LINE.

VERTICAL REFERENCE LINE

Ⓞ OF CHASSIS

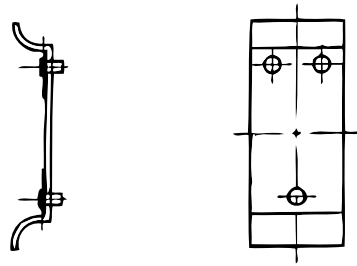
SEE NOTE 3

41" FROM FINISHED FLOOR (CENTER LINE OF PUSH BAR)

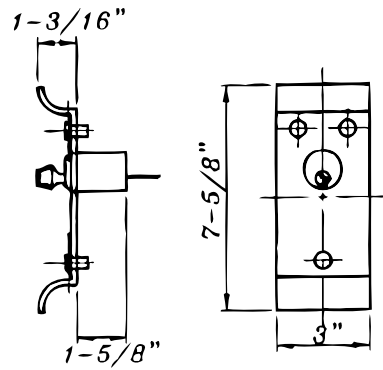
- ⑥ NO ADDITIONAL DOOR PREPARATION IS REQUIRED FOR MOUNTING THE OUTSIDE TRIM
- Ⓞ SURFACE OF DOOR WHERE EXIT DEVICE IS TO BE APPLIED MUST BE FLUSH
- ④ SEE MASTER SHEET FOR AREAS REQUIRING REINFORCEMENTS
- ③ SEE STRIKE TEMPLATE FOR TOP AND BOTTOM STRIKES. FOR 881 MONITOR STRIKE SEE TEMPLATE 4386.
- ②-Ⓞ WE RECOMMEND THAT ALL TAPPED HOLES BE DRILLED & TAPPED IN FIELD
- ① TOLERANCE ON ALL DIMENSIONS ±1/64"

2200EO/2220EO

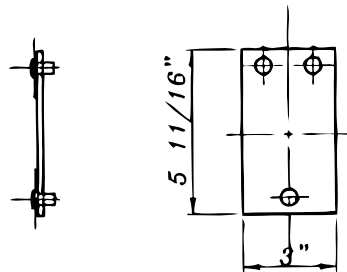




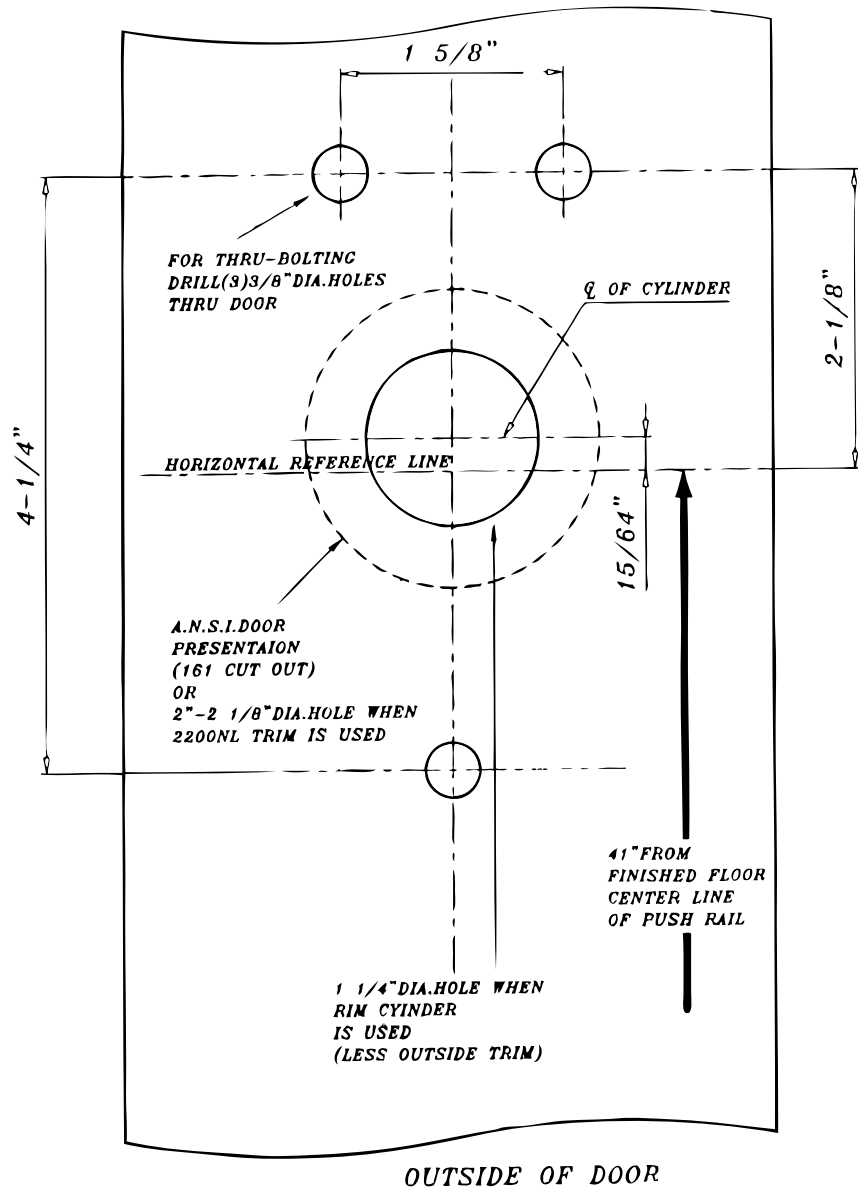
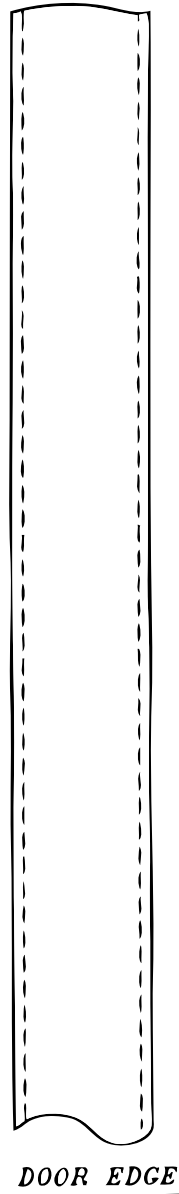
2200 DTP



2200 NL



2200 EOP



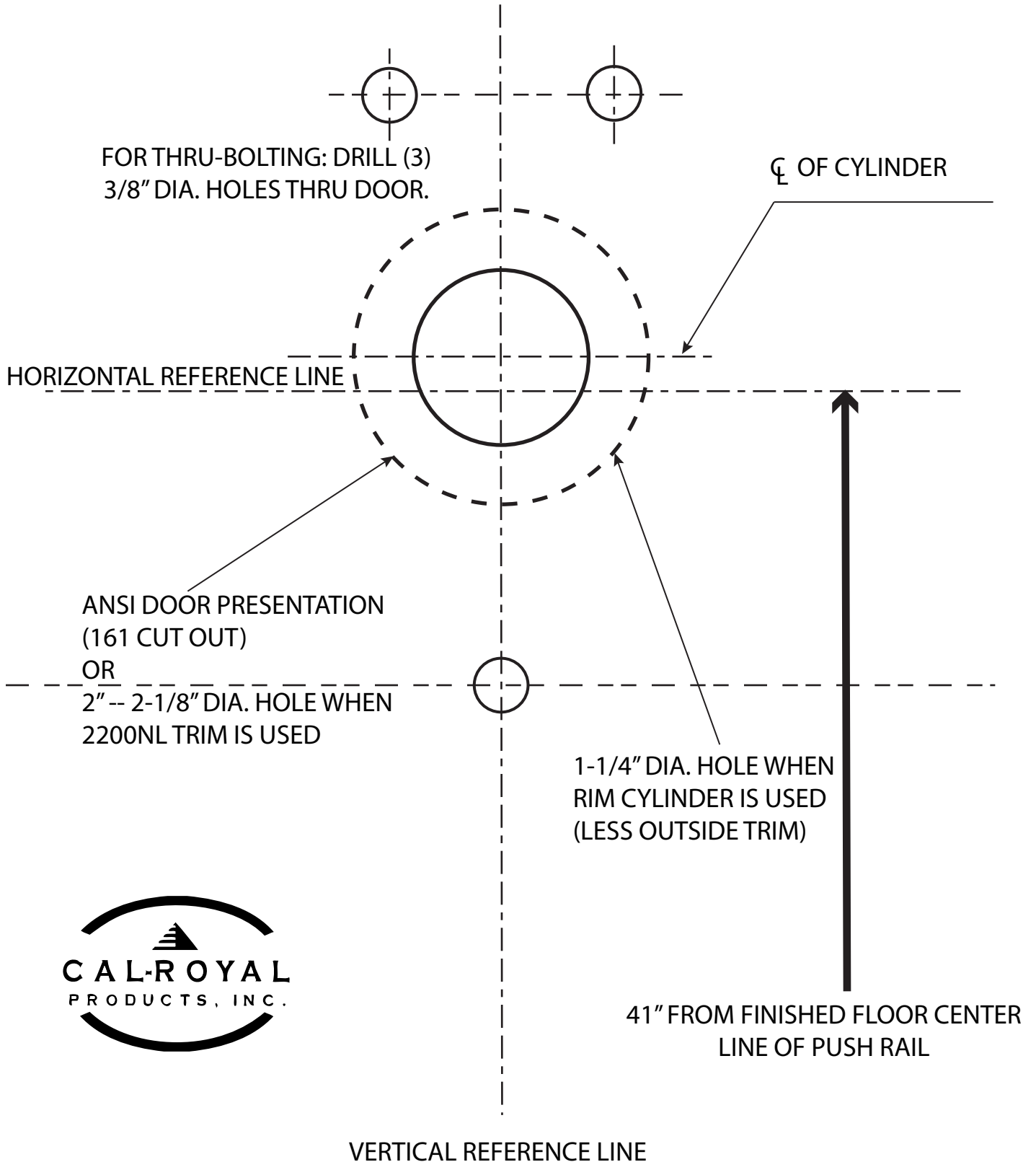
① REFER TO EXIT DEVICE TEMPLATE FOR VERTICAL & HORIZONTAL REFERENCE LINE

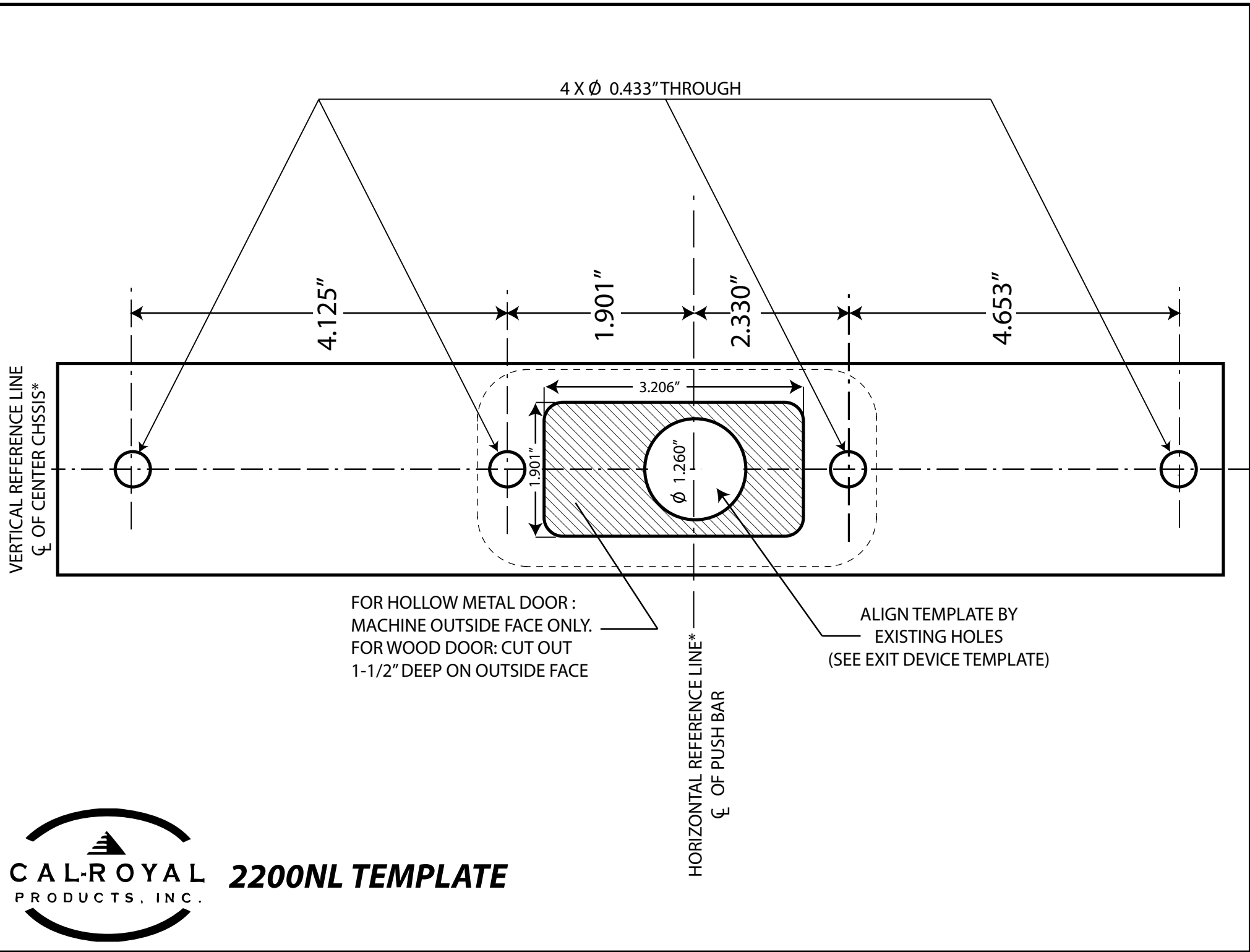
# 2200NL PULL TRIM TEMPLATE



# TEMPLATE

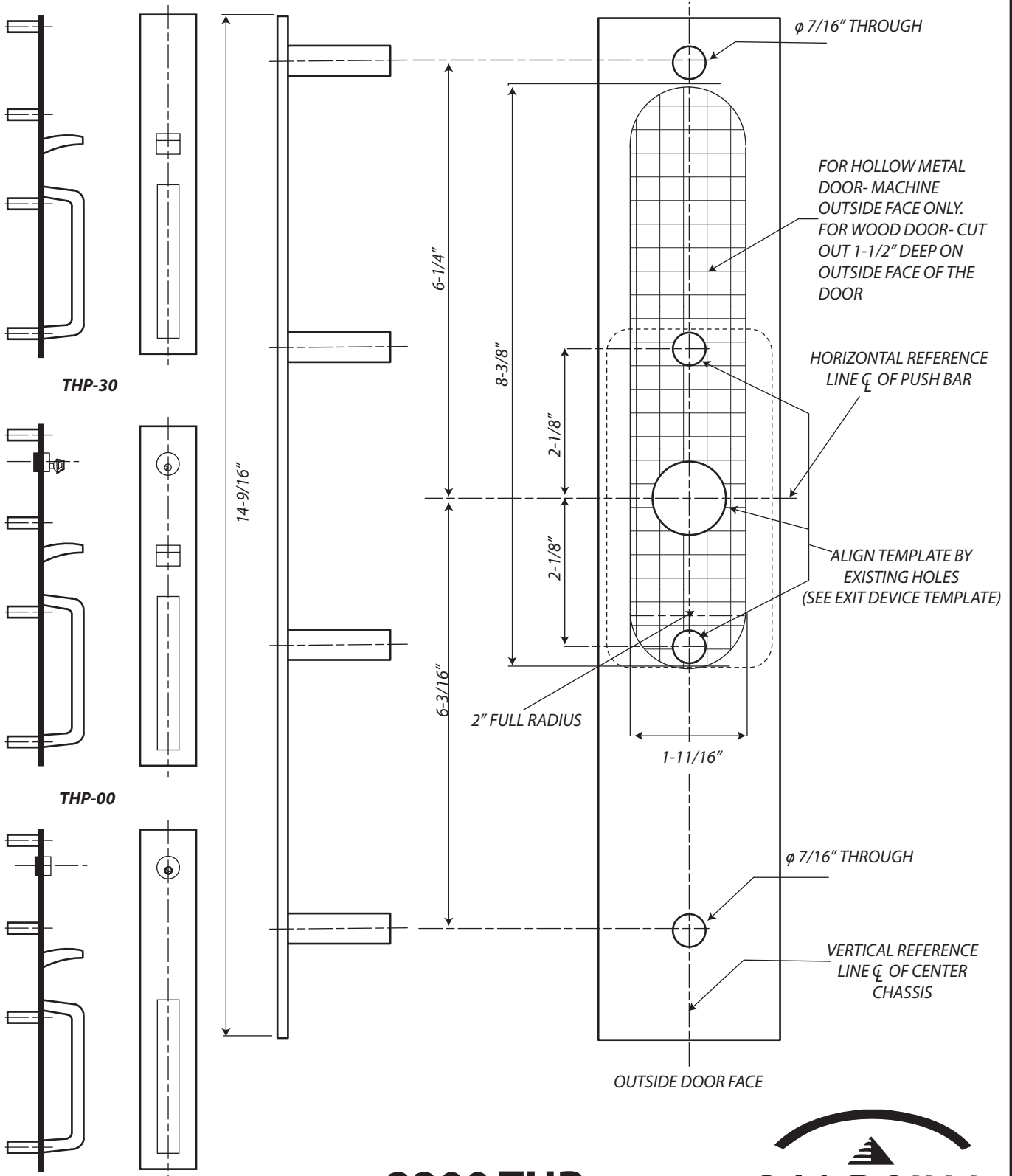
FOR  
2200EO & F2200EO SERIES RIM TYPE EXIT DEVICE X 2200NL, PULL OR EOP TRIM  
AND  
2260V & F2260V SERIES VERTICAL ROD TYPE EXIT DEVICE X 2200 PULL OR EOP TRIM





**2200NL TEMPLATE**

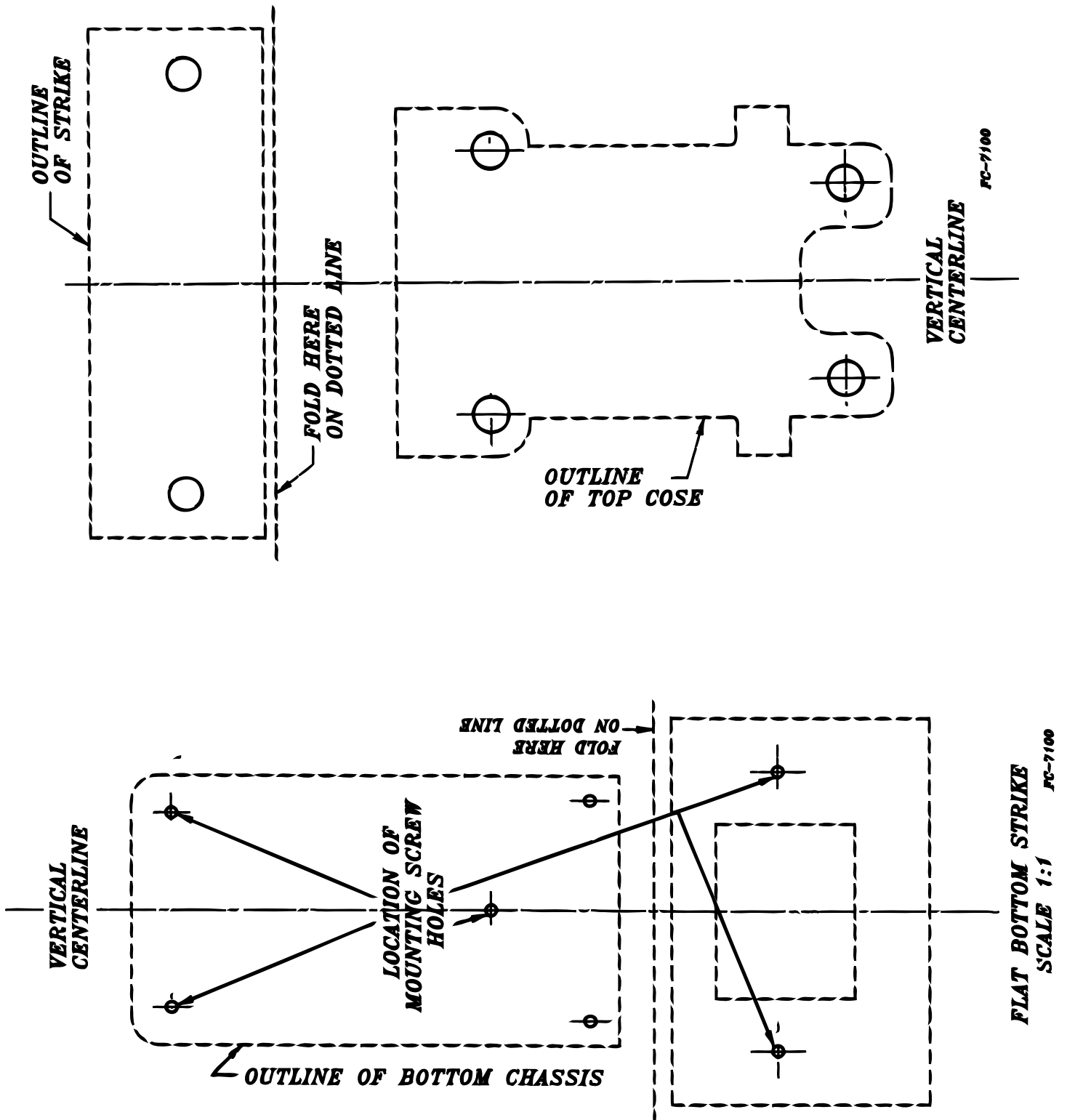
# TEMPLATE: THUMBPIECE TRIM FOR 2200 SERIES



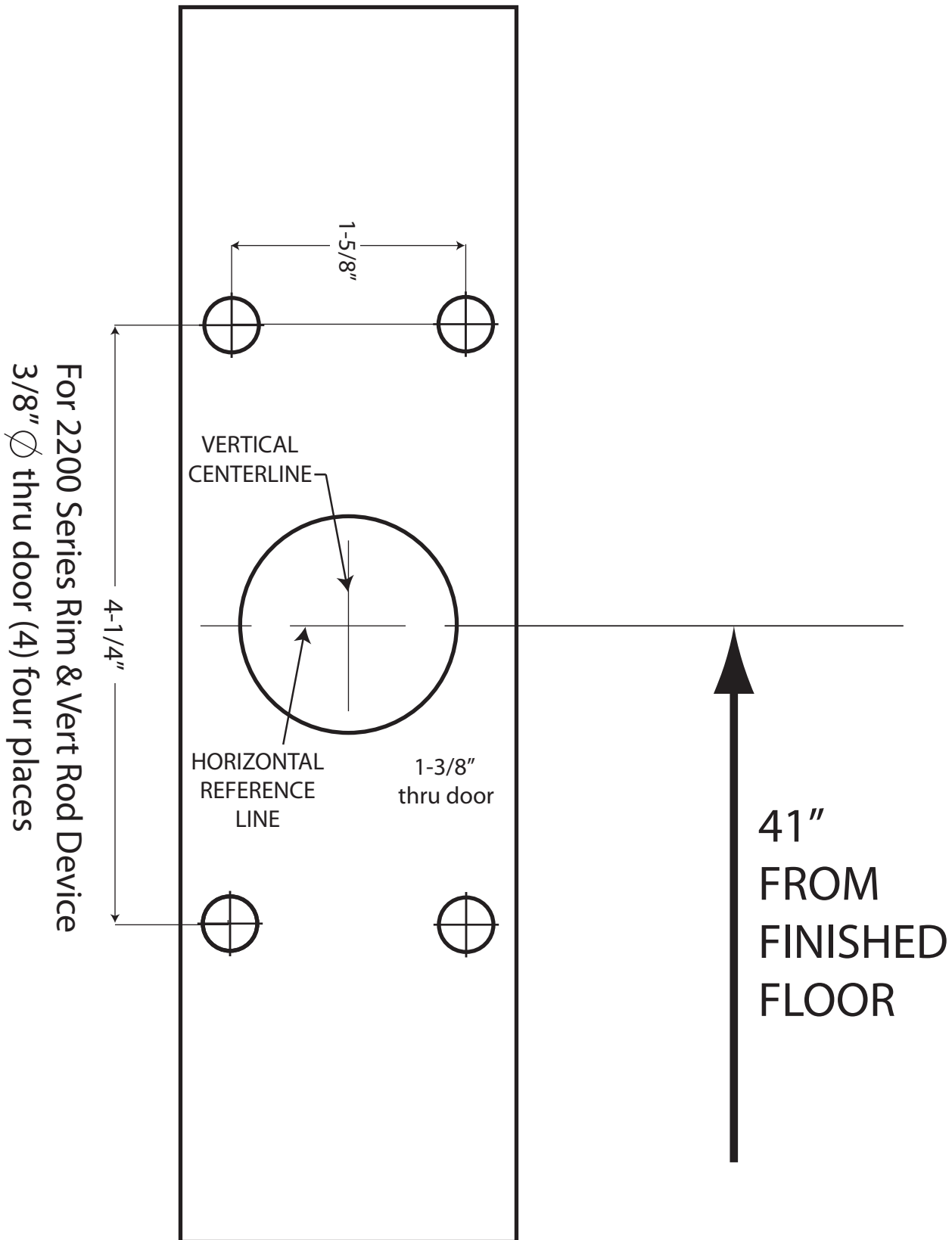
**2200 THP**



# 2260 TEMPLATE FOR TOP AND BOTTOM CHASSIS ASSEMBLY

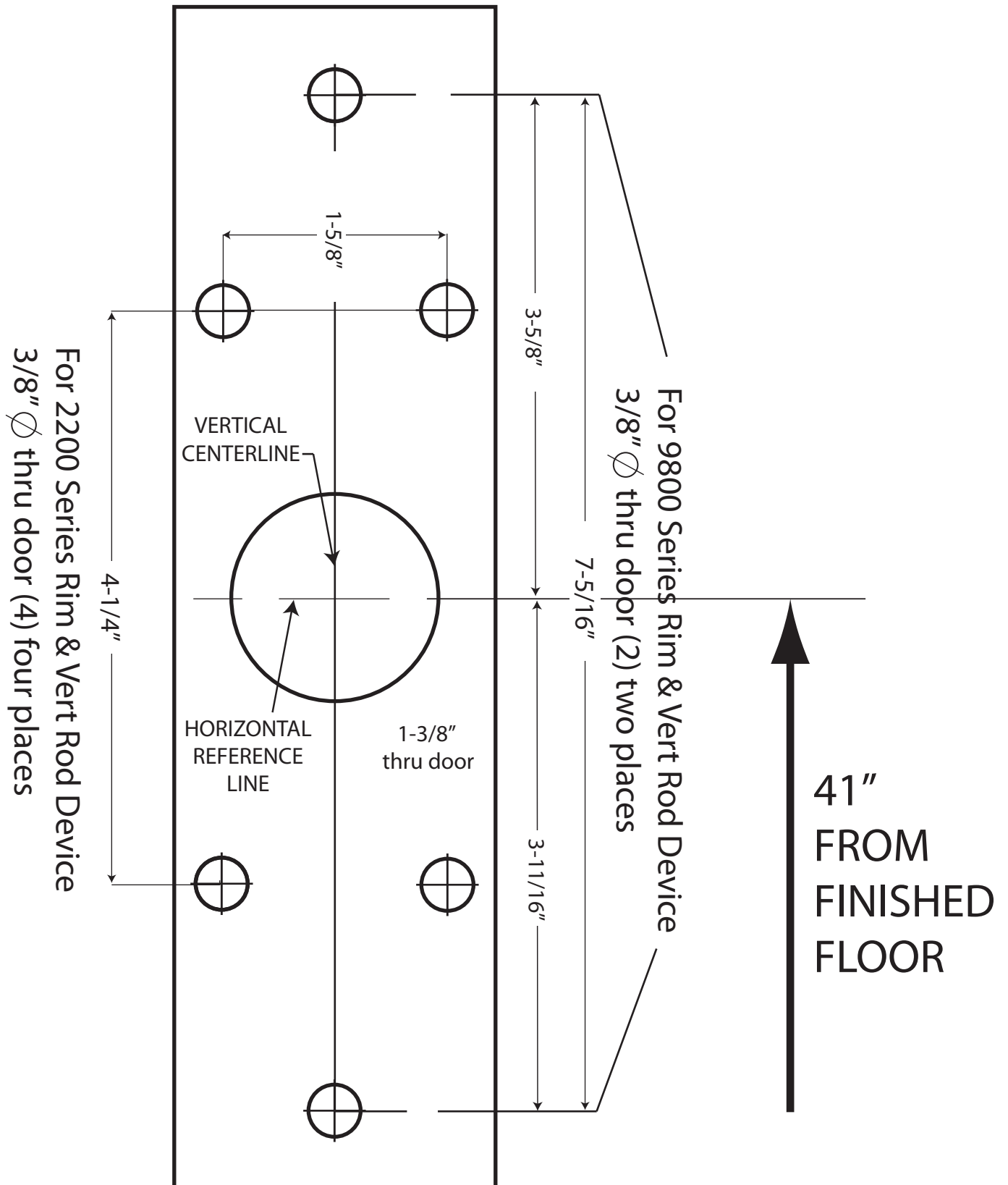


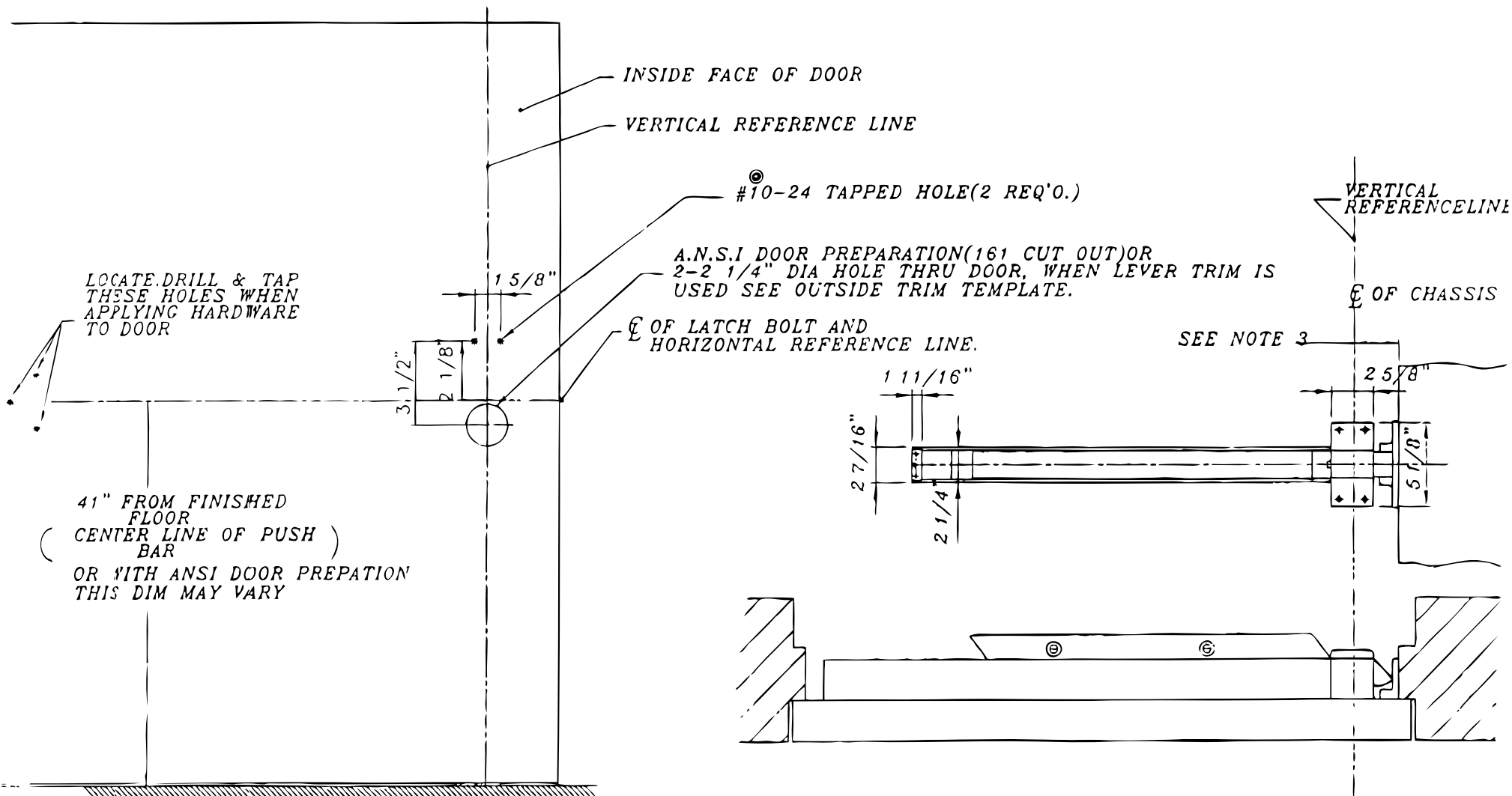
# #ESC-22 ESC Lever Trim for 2200 series Rim & Vertical Rod Device





#ESC-22 Esc Lever Trim for 2200 series  
#ESC-98 Esc Lever Trim for 9800 series  
Rim & Vertical Rod Device



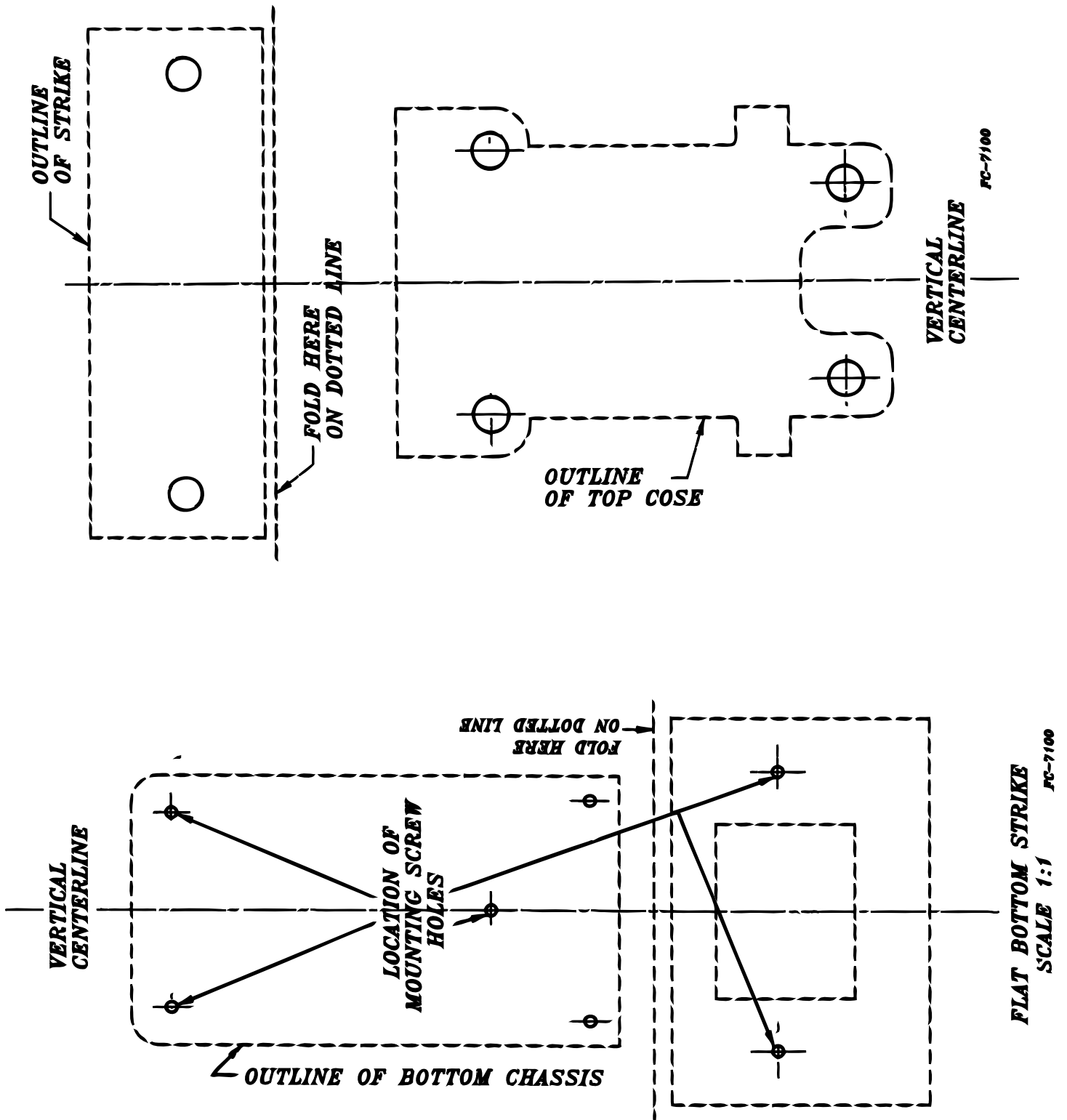


- Ⓞ NO ADDITIONAL DOOR PREPARATION IS REQUIRED FOR MOUNTING THE OUTSIDE TRIM
- Ⓢ SURFACE OF DOOR WHERE EXIT DEVICE IS TO BE APPLIED MUST BE FLUSH
- Ⓞ SEE MASTER SHEET FOR AREAS REQUIRING REINFORCEMENTS
- Ⓞ SEE STRIKE TEMPLATE FOR TOP AND BOTTOM STRIKES FOR MONITOR STRIKE SEE TEMPLATE
- Ⓢ WE RECOMMEND THAT ALL TAPPED HOLES BE DRILLED & TAPPED IN FIELD
- Ⓞ TOLERANCE ON ALL DIMENSIONS ±1/64"

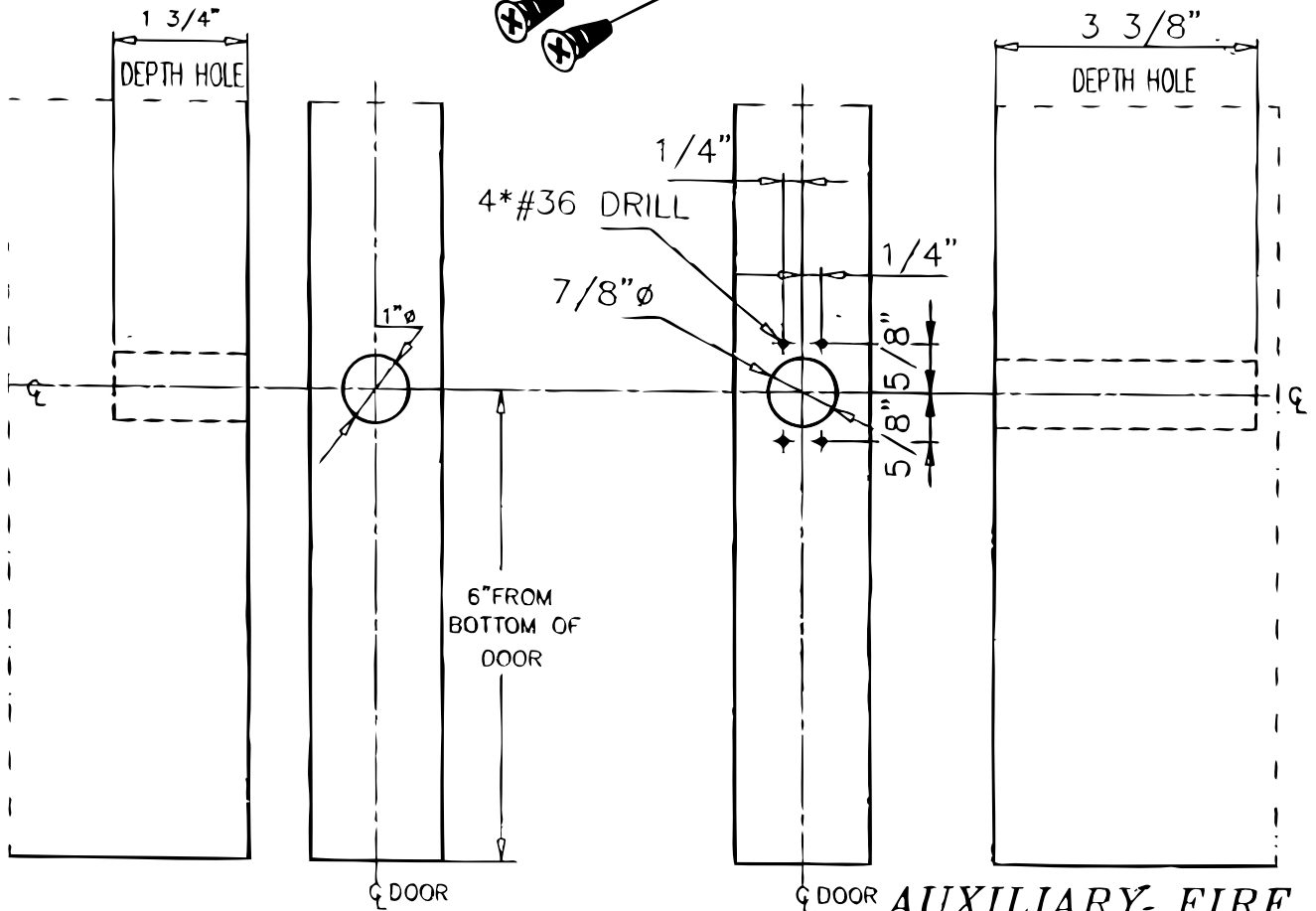
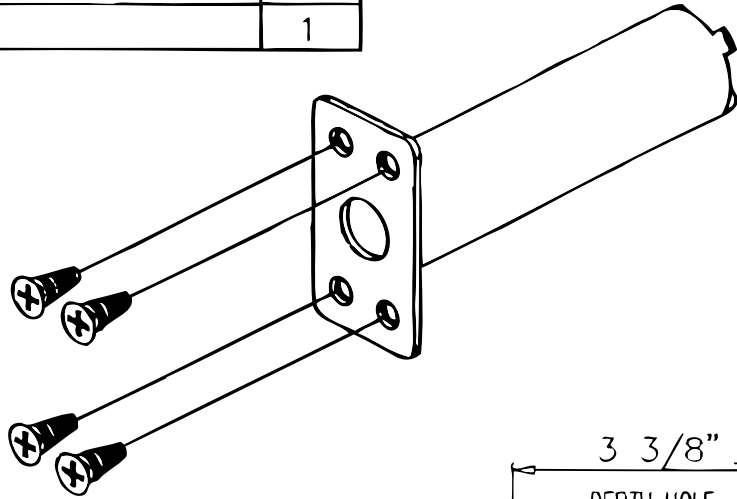
F2200 RIM



# F2200 TEMPLATE FOR TOP AND BOTTOM CHASSIS ASSEMBLY



DESCRIPTION	QTY.
AUXILIARY FIRE LATCH ASSEMBLY	1
#6X3/6" TYPE AB FLAT HEAD SCREW	4
STRIKE HOLE PLUG	1

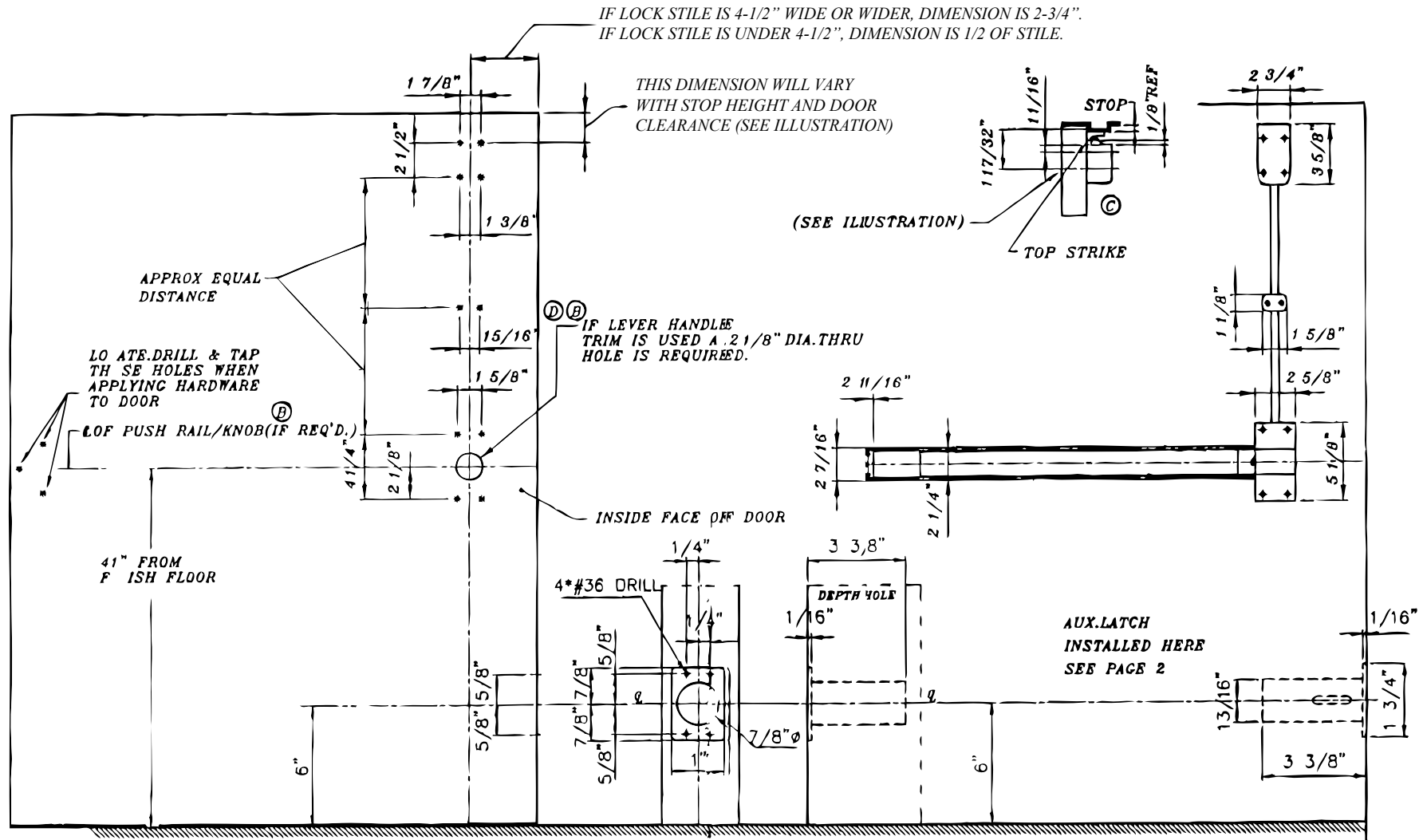


*STRIKE HOLE PLUG  
DOOR LEAF*

*AUXILIARY- FIRE  
LATCH ASSEMBLY  
DOOR LEAF*

**LBRF2260V**  
**AUXILLIARY FIRE LATCH ASSEMBLY**





5. SURFACE OF DOOR WHERE EXIT DEVICE IS TO BE APPLIED MUST BE FLUSH
4. SEE MASTER SHEET FOR AREAS REQUIRING REINFORCEMENTS
3. SEE STRIKE TEMPLATE FOR TOP AND BOTTOM STRIKES.
2. WE RECOMMEND THAT ALL TAPPED HOLES BE DRILLED & TAPPED IN FIELD
1. TOLERANCE ON ALL DIMENSIONS  $\pm 1/64"$

LBRFF2260V

