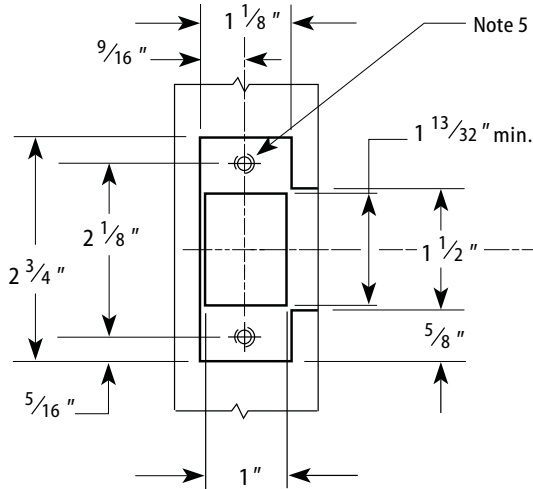
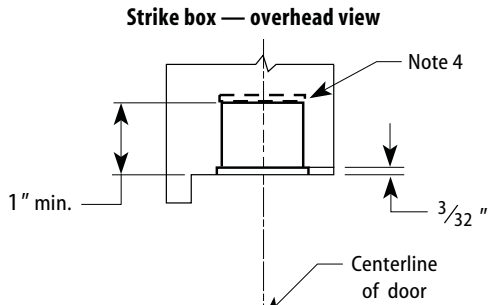


Series 93KG, 93KBV, 93KZ	Backset 2 3/4"	Strike Small ANSI strike (STK)	Door thickness 1 3/4" to 2 1/4"	Rev date 3/2003	Template number G01	Rev C
Title Installation Specifications for 93KG, 93KBV, and 93KZ Cylindrical Locks with Small Strike				BEST ACCESS SYSTEMS		

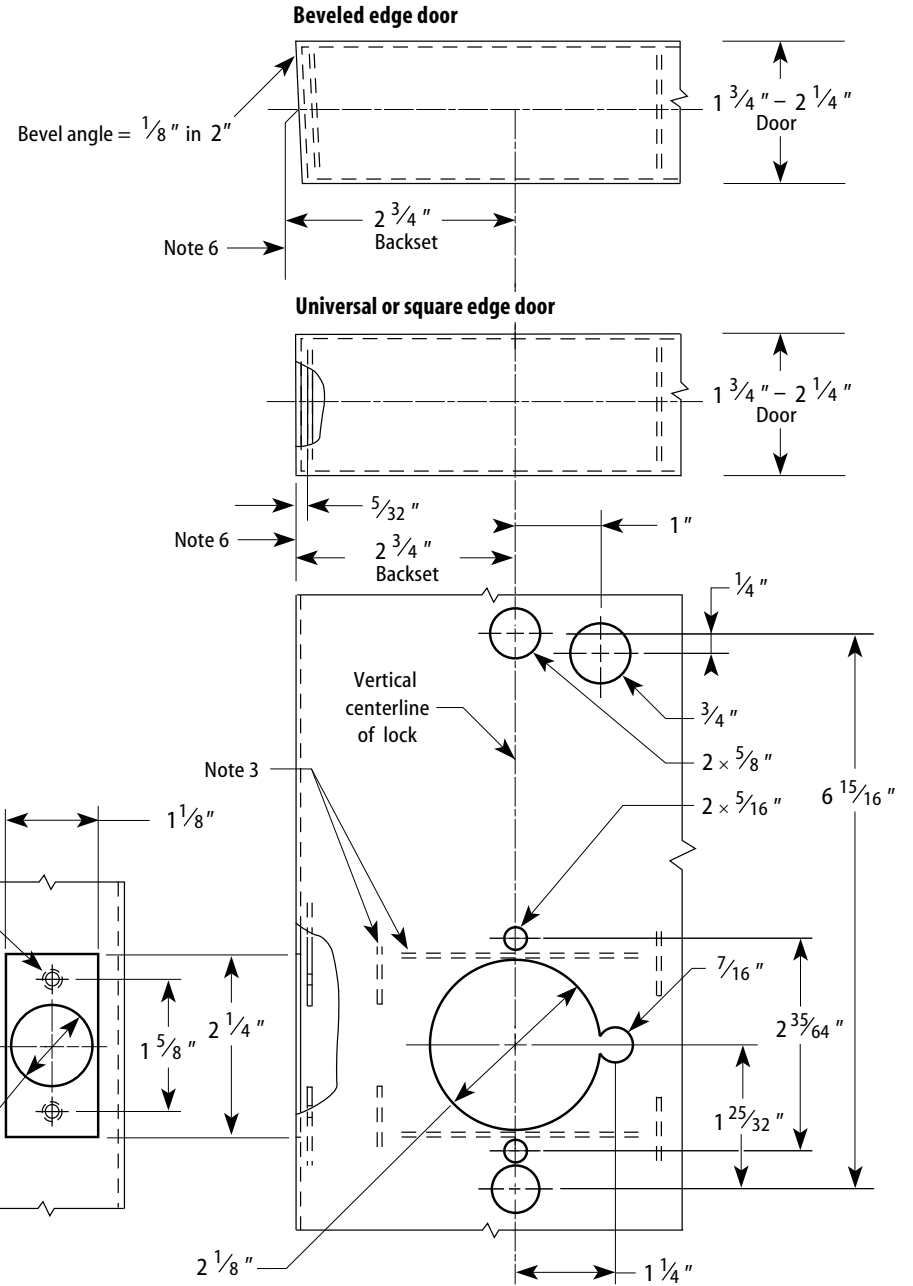
T63305/Rev C 1821780 ER-7991-1 Mar 2003

Notes

1. Also see the G05 Template—Installation Template for 93KG, 93KBV, and 93KZ Cylindrical Locks.
2. Allow plus tolerance for clearance per ANSIA115.5. The general tolerance is $\pm 1/64$ ".
3. The lock and latch case support are required from the door manufacturer.
4. The plaster guard is required from the frame manufacturer.
5. Prepare for a #8-32 screw.
6. For backsets other than 2 3/4", position the vertical centerline of the lock appropriately.



Frame preparation



2 3/4" Backset door preparation