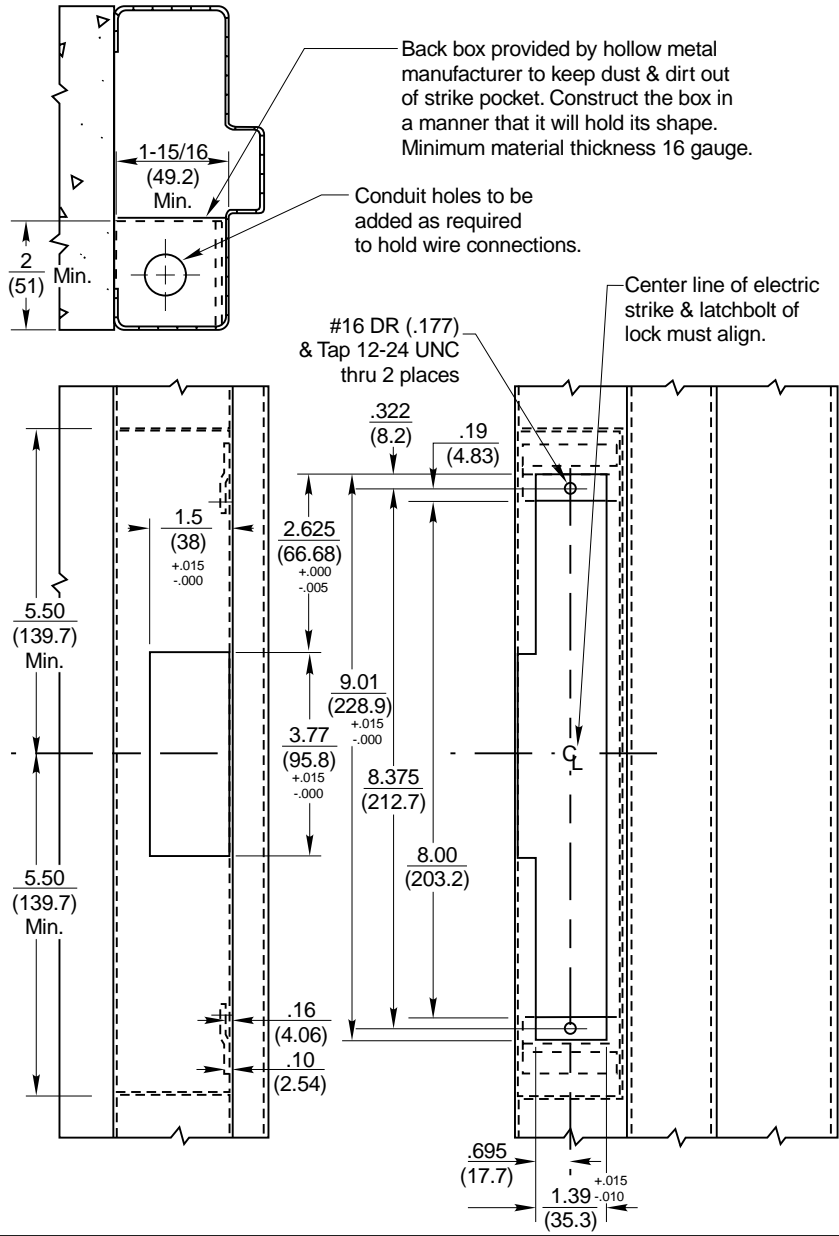
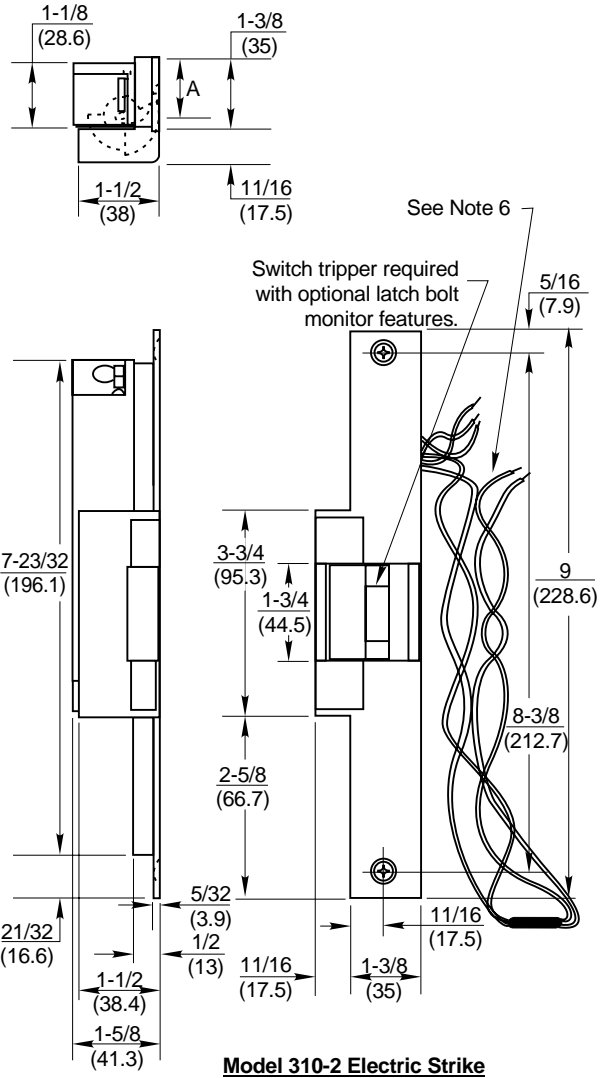


Frame Preparation (RHRB Application Shown)

Drawing shows only one method of installation. Method of installation may vary per door & frame manufacturer.



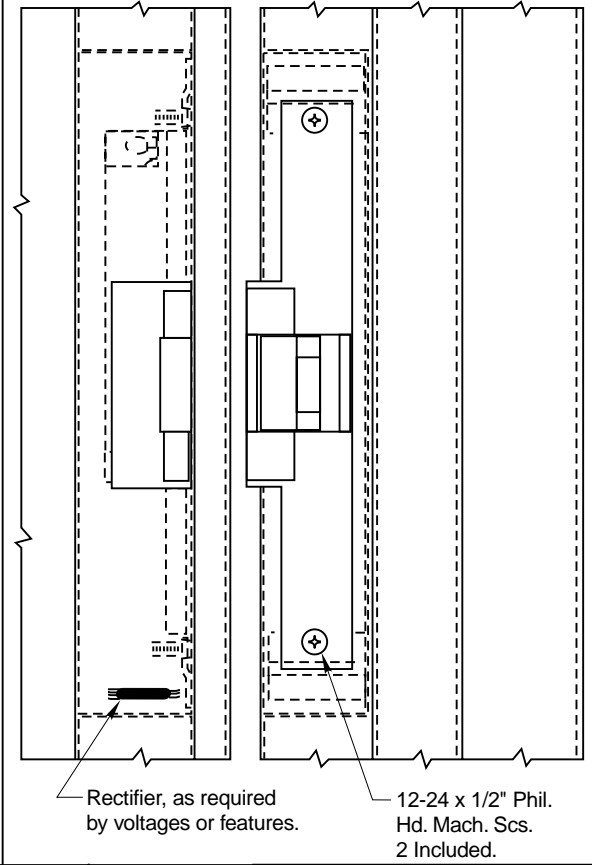
Dimension "A" (Keeper Position) is adjustable from .875 to 1.062. To adjust, loosen the two 12-24 Hex HD strike mounting bolts, reposition strike, and retighten bolts.



Model 310-2 Electric Strike

NOTES:

1. DO NOT SCALE - All dimensions in inches (mm).
2. Dimensions subject to change without notice.
3. Number of wires will vary per features of strike.
4. Cut off all excess wire not req'd for installation.
5. Wires to be run from side & rear of strike to conduit connection.
6. All wiring connections to be made at this end of strike. If a rectifier (optional) is used, it may be installed at either end of strike.
7. Refer to catalog for available finishes, voltages, & optional features.
8. Door & frame manufacturers are responsible for providing adequate construction or reinforcements for proper installation of hardware.
9. Tolerances shown are for cutouts.

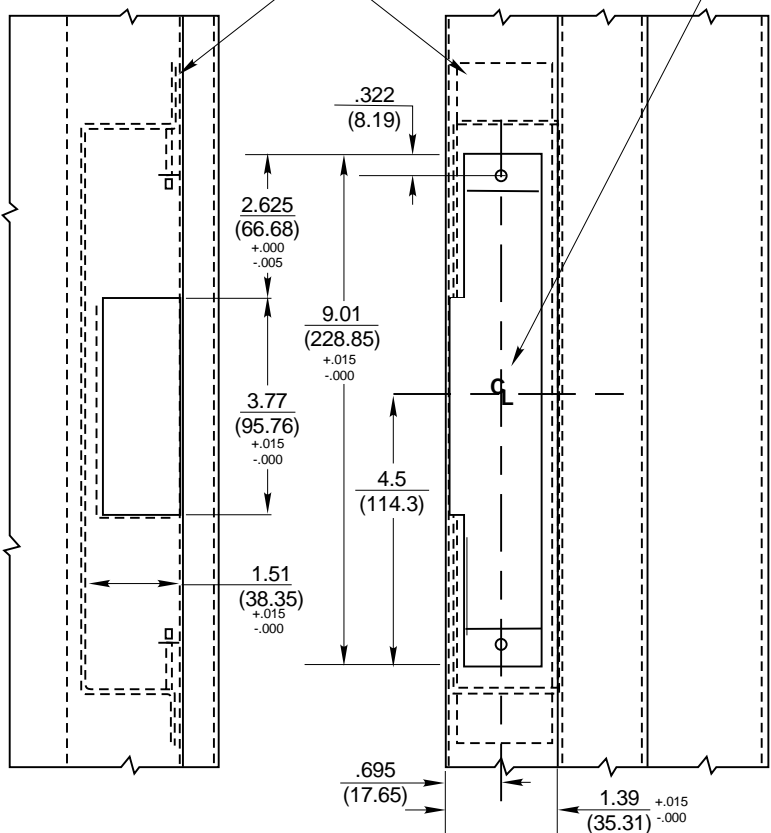
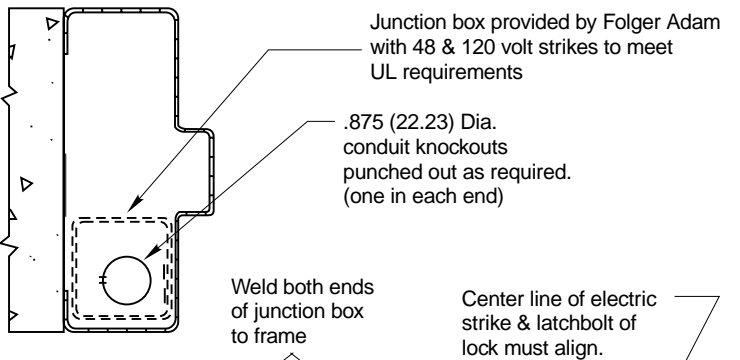


310-2 Electric Strike

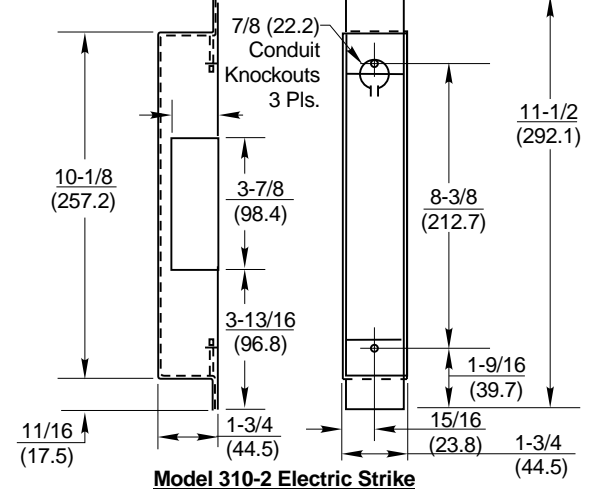
	REF. REPAIR PART DWG.	
	245-2000-001	
P.O. BOX 25288, CHARLOTTE, NC 28229-8010	DATE	8-98
TEMPLATE NUMBER	092-0245-004	

Frame Preparation (RHRB Application Shown)

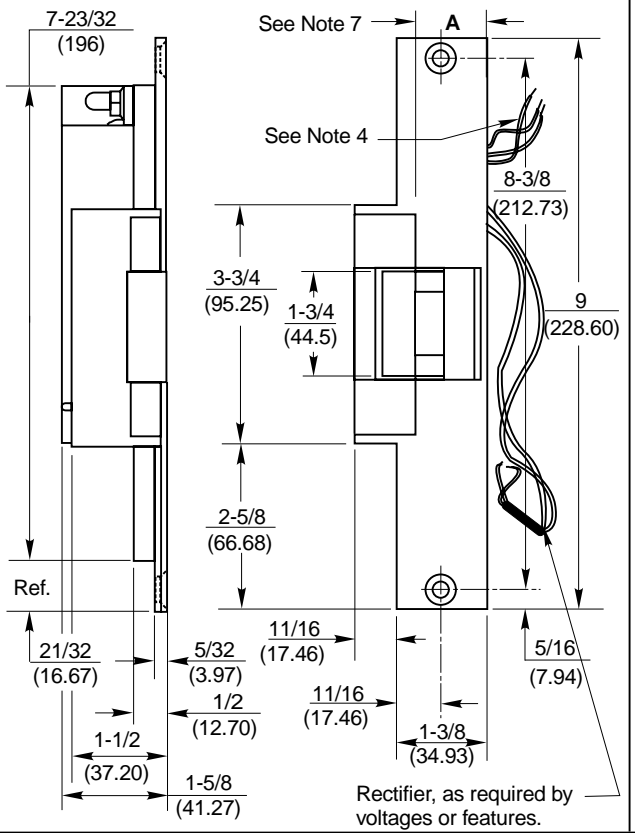
Drawing shows only one method of installation. Method of installation may vary per door & frame manufacturer.



300 Series Junction Box

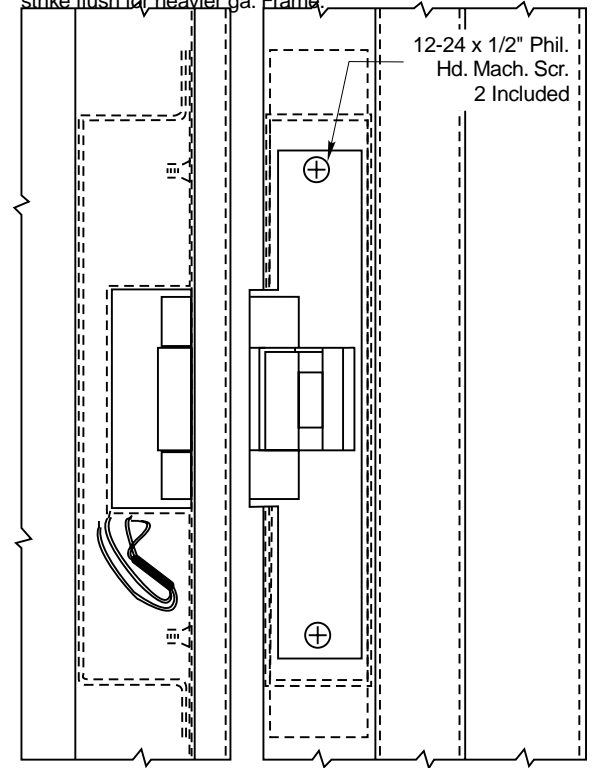


Model 310-2 Electric Strike



NOTES:

1. DO NOT SCALE - All dimensions in inches (mm).
2. Dimensions subject to change without notice.
3. Number of wires will vary per features of strike.
4. All wiring connections to be made at this end of strike. If a rectifier (optional) is used, it must be installed at opposite end of wire connections.
5. Wires to be run from side & rear of strike to conduit connection.
6. Cut off all excess wire not req'd for installation.
7. Dimension "A" (keeper position) is adjustable from .875 (22.35) to 1.062 (26.97). To adjust, loosen the two 12-24 hex head strike mounting bolts, reposition strike, & retighten bolts.
8. Switch tripper required with optional latch bolt monitor features.
9. Tolerances shown are for cutouts.
10. Refer to catalog for standard & optional features.
11. Door & frame manufacturers are responsible for providing adequate construction or reinforcements for proper installation of hardware.
12. Junction box is designed for use with 16 ga. frame. Shim strike flush for heavier ga. frame.



**310-2 Electric Strike
With Junction Box**



REF. REPAIR PART DWG.

245-2000-001

P.O. BOX 25288, CHARLOTTE, NC 28229-8010

TEMPLATE NUMBER

092-0245-007

DATE

9-98

Frame Preparation (Inactive Application Shown)

Drawing shows only one method of installation. Method of installation may vary per door & frame manufacturer.

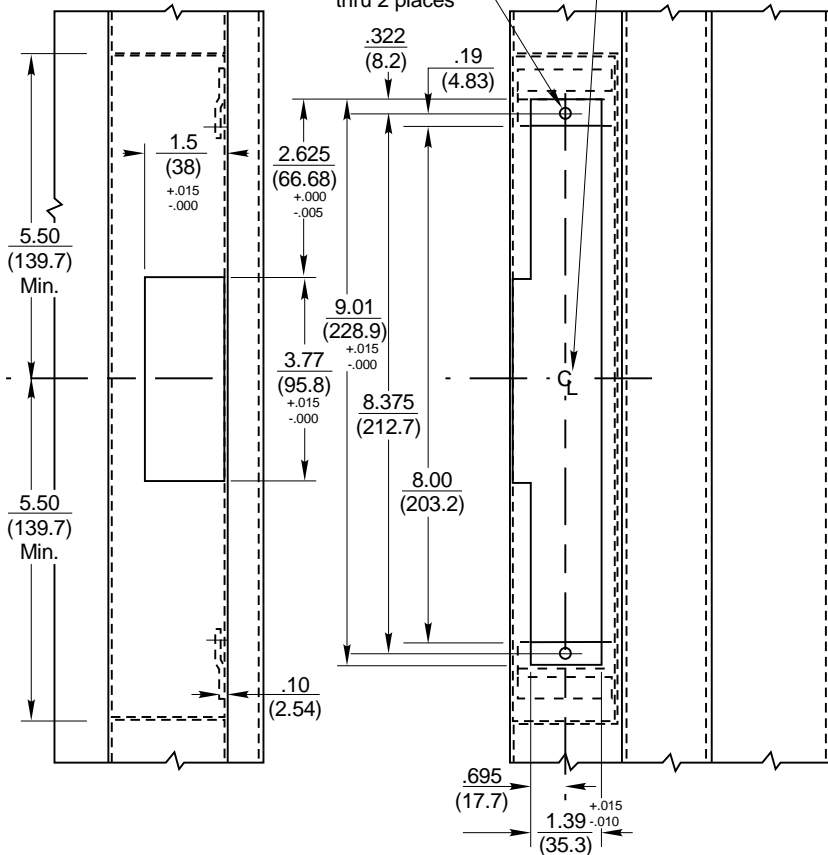
*** Door Coordinator Required.**

Back box provided by hollow metal manufacturer to keep dust & dirt out of strike pocket. Construct the box in a manner that it will hold its shape. Minimum material thickness 16 gauge.

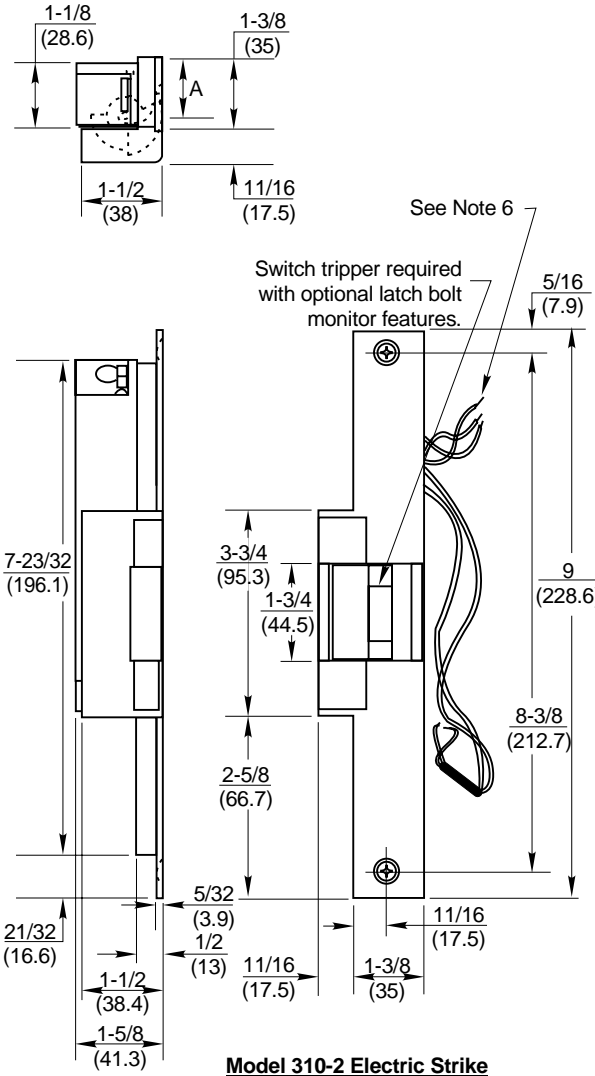
Conduit holes to be added as required to hold wire connections.

Center line of electric strike & latchbolt of lock must align.

#16 DR (.177) & Tap 12-24 UNC thru 2 places



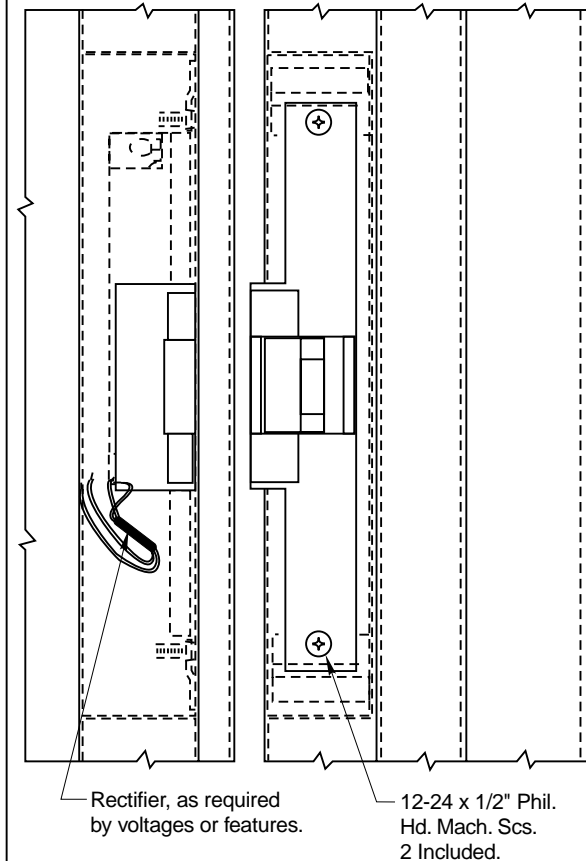
Dimension "A" (Keeper Position) is adjustable from .875 to 1.062. To adjust, loosen the two 12-24 Hex HD strike mounting bolts, reposition strike, and retighten bolts.



Model 310-2 Electric Strike

NOTES:

1. DO NOT SCALE - All dimensions in inches (mm).
2. Dimensions subject to change without notice.
3. Number of wires will vary per features of strike.
4. Cut off all excess wire not req'd for installation.
5. Wires to be run from side & rear of strike to conduit connection.
6. All wiring connections to be made at this end of strike. If a rectifier (optional) is used, it may be installed at either end of strike.
7. Refer to catalog for available finishes, voltages, & optional features.
8. Door & frame manufacturers are responsible for providing adequate construction or reinforcements for proper installation of hardware.
9. Tolerances shown are for cutouts.
10. Requires a Door Coordinator.



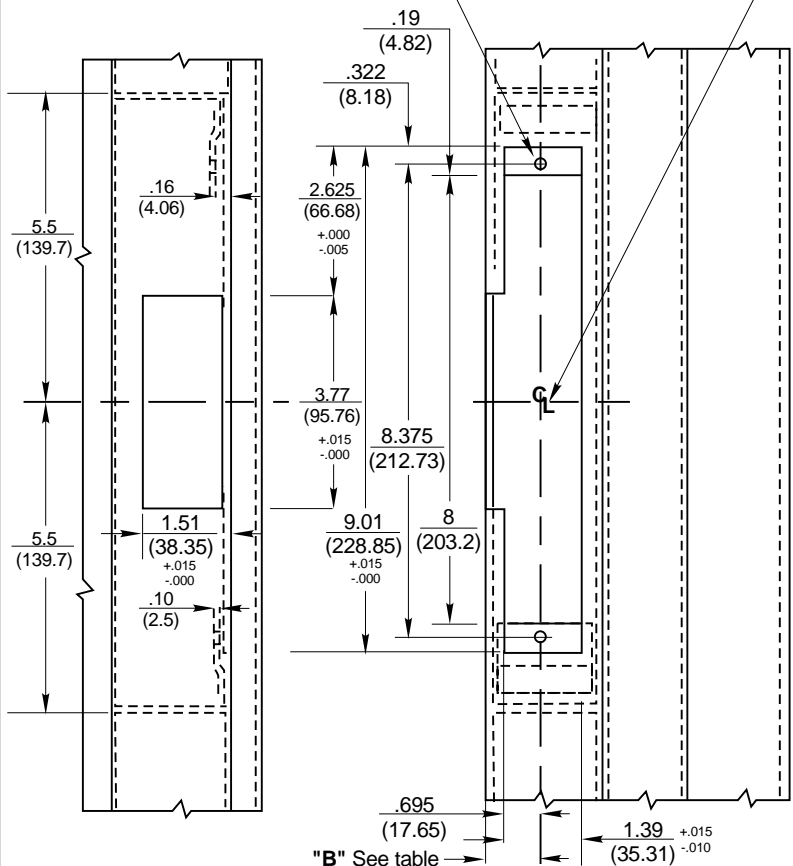
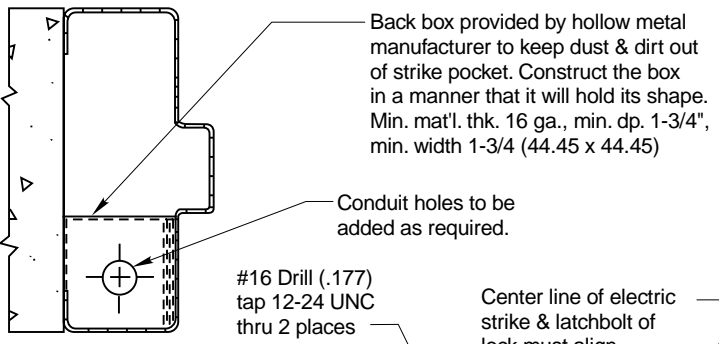
310-2 Electric Strike
Inactive Leaf of a Pair of Doors

	REF. REPAIR PART DWG.
	245-2000-001
TEMPLATE NUMBER	DATE
092-0245-043	8-98

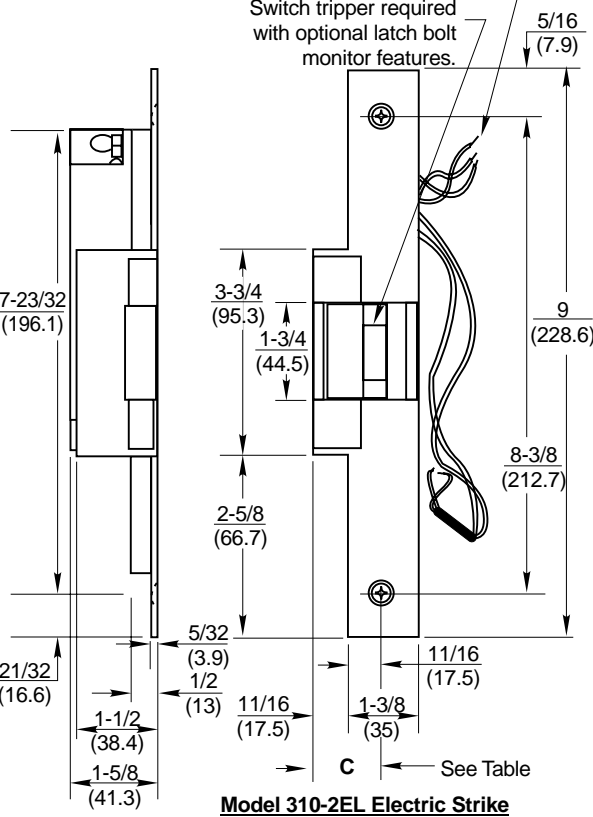
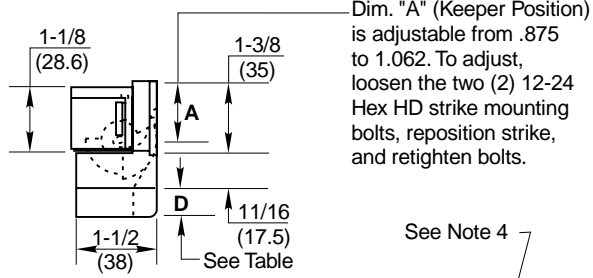
P.O. BOX 25288, CHARLOTTE, NC 28229-8010

Frame Preparation (RHRB Application Shown)

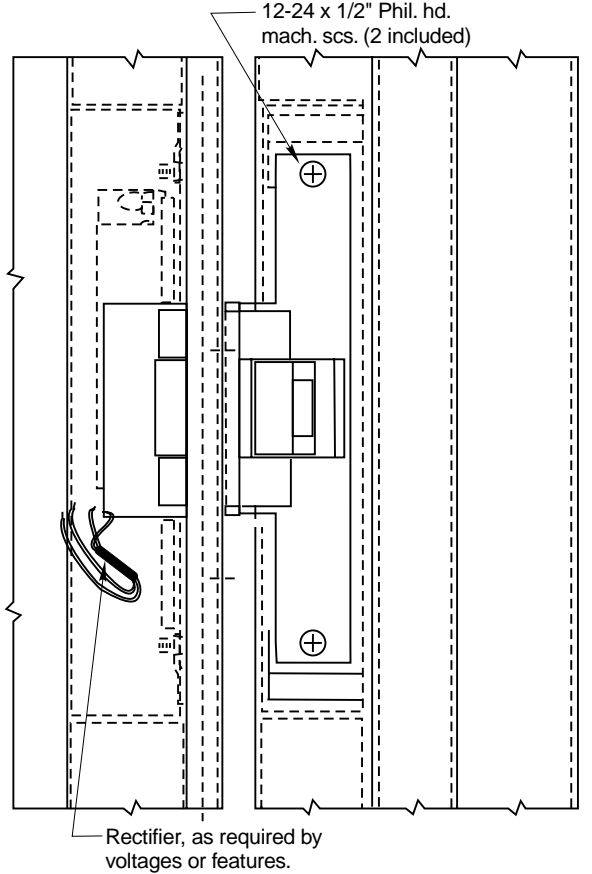
Drawing shows only one method of installation. Method of installation may vary per door & frame manufacturer.



"B"	"C"	"D"
1.250 to 1.499	1.625	.250
1.500 to 1.749	1.875	.500
1.750 to 1.999	2.125	.750
2.000 to 2.249	2.375	1.000
2.250 to 2.499	2.625	1.250
2.500 to 2.749	2.875	1.500
2.750 to 2.999	3.125	1.750
3.000 to 3.250	3.375	2.000



- NOTES:
- DO NOT SCALE - All dimensions in inches (mm).
 - Dimensions subject to change without notice.
 - Number of wires will vary per features of strike.
 - All wiring connections to be made at this end of strike. If a rectifier (optional) is used, it may be installed at either end of strike.
 - Cut off all excess wire not req'd for installation.
 - Wires to be run from side & rear of strike to conduit connection.
 - Refer to catalog for standard & optional features.
 - Door & frame manufacturers are responsible for providing adequate construction or reinforcements for proper installation of hardware.
 - Tolerances shown are for cutouts.



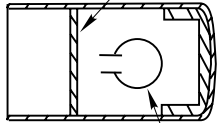
310-2EL Electric Strike

	REF. REPAIR PART DWG.
	P.O. BOX 25288, CHARLOTTE, NC 28229-8010
TEMPLATE NUMBER	DATE
092-0245-013	9-98

Frame Preparation (RHRB Application Shown)

Drawing shows only one method of installation. Method of installation may vary per door & frame manufacturer.

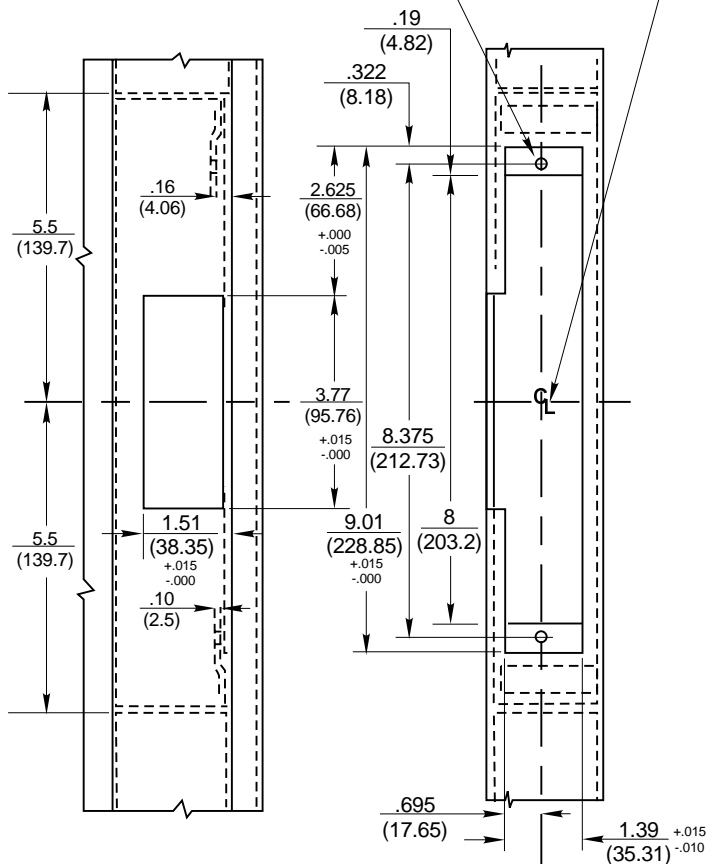
Back box provided by hollow metal manufacturer to keep dust & dirt out of strike pocket. Construct the box in a manner that it will hold its shape. Min. Mat'l. THK. 16 ga., Min. DP. 1-3/4", Min. Width 1-3/4" (44.45 x 44.45)



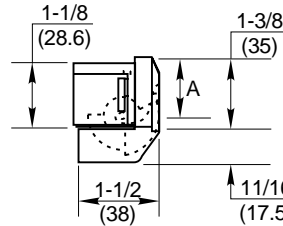
Conduit holes to be added as required.

#16 Drill (.177) tap 12-24 UNC thru 2 places

Center line of electric strike & latchbolt of lock must align.

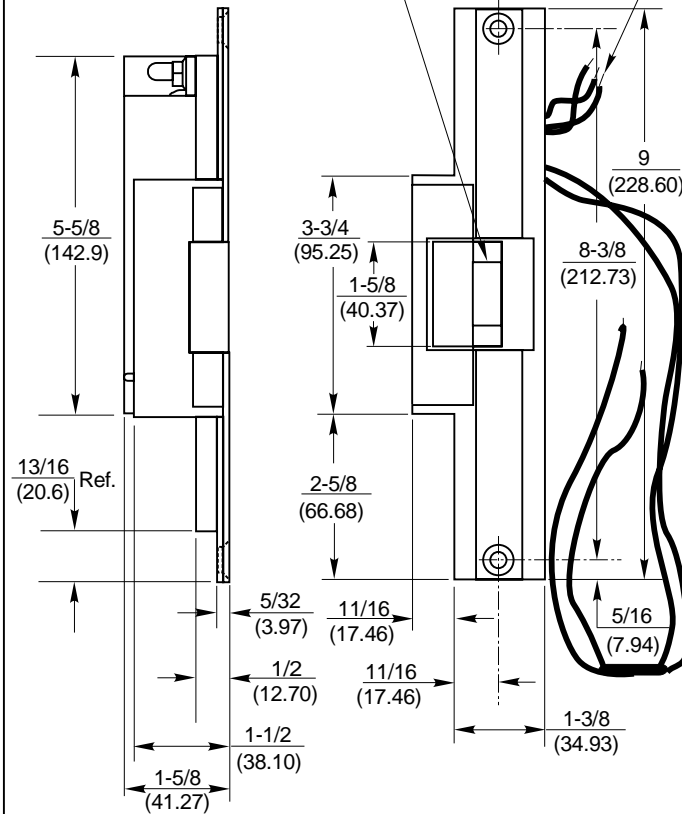


Dimension "A" (Keeper Position) is adjustable from .875 to 1.062. To adjust, loosen the two 12-24 Hex HD strike mounting bolts, reposition strike, and retighten bolts.



See Note 4

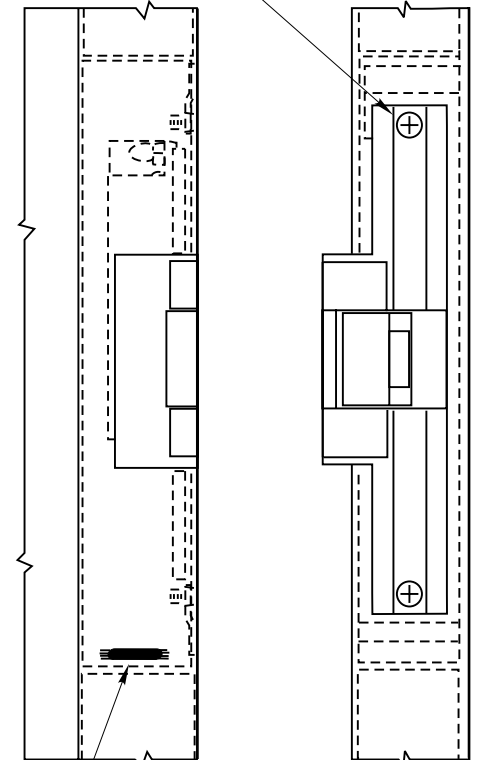
Switch Tripper Req'd with Optional Latch Bolt Monitor Features



NOTES:

1. DO NOT SCALE - All dimensions in inches (mm).
2. Dimensions subject to change without notice.
3. Number of wires will vary per features of strike.
4. All wiring connections to be made at this end of strike. If a rectifier (optional) is used, it may be installed at either end of strike.
5. Cut off all excess wire not req'd for installation.
6. Wires to be run from side & rear of strike to conduit connection.
7. Refer to catalog for standard & optional features.
8. Door & frame manufacturers are responsible for providing adequate construction or reinforcements for proper installation of hardware.
9. Tolerances shown are for cutouts.

12-24 X 1/2" Phil. Hd. Mach. Scs. (2 Included)



Rectifier, as required by voltages or features.

310-2 RF Electric Strike



REF. REPAIR PART DWG. 245-1000-001
093-0245-002

P.O. BOX 25288, CHARLOTTE, NC 28229-8010

TEMPLATE NUMBER

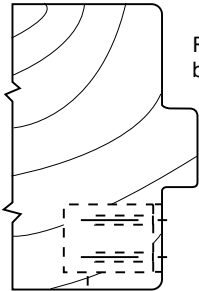
092-0245-016

DATE

9-98

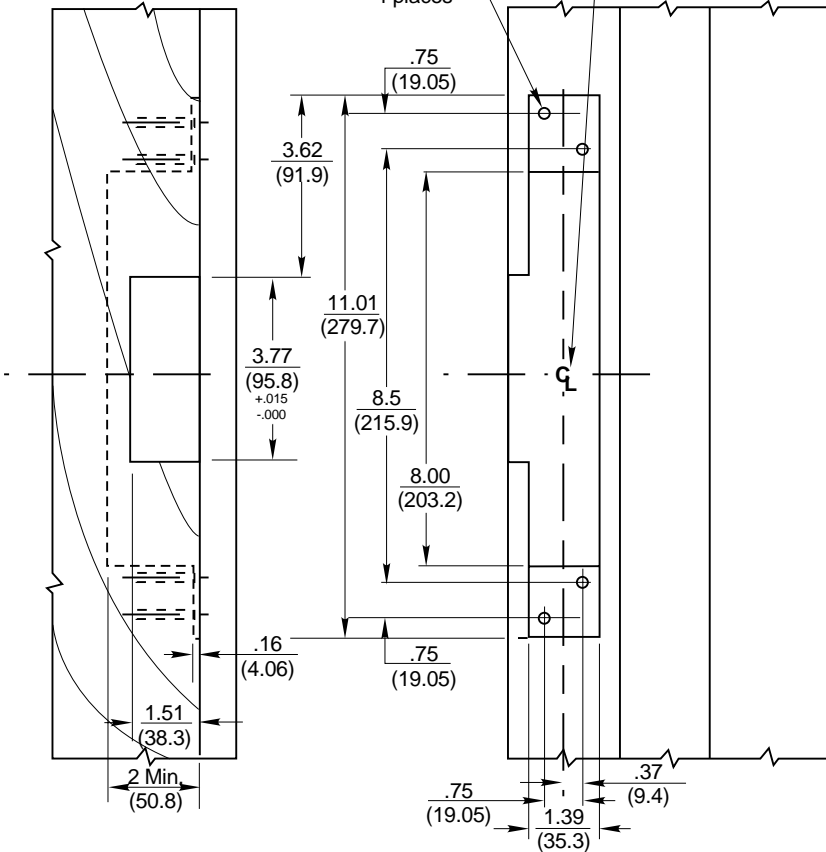
Frame Preparation (RHRB Application Shown)

Drawing shows only one method of installation. Method of installation may vary per door & frame manufacturer.



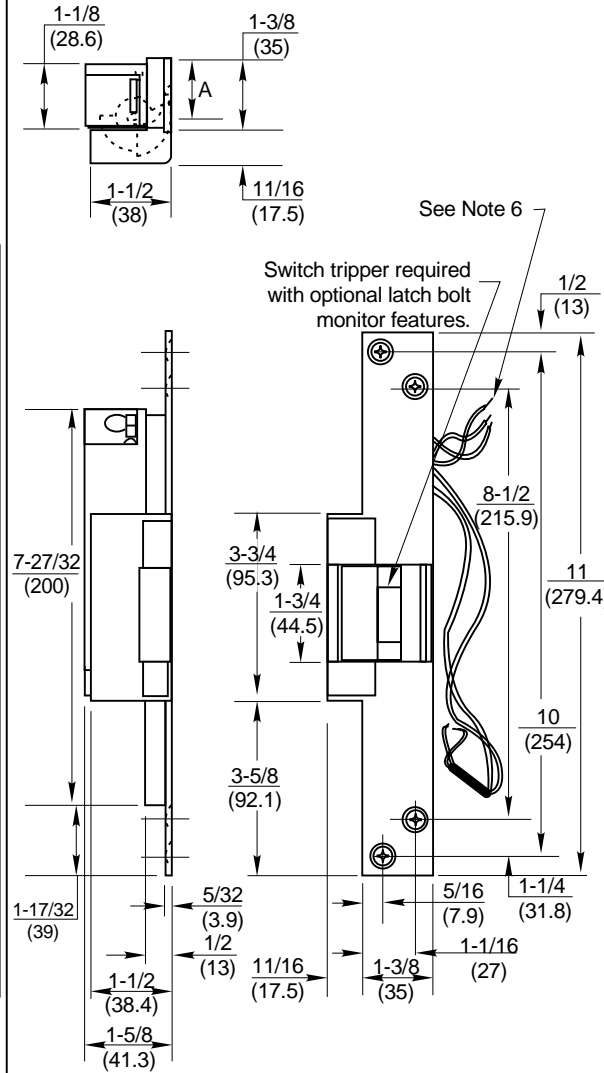
Routing of wires for strike to be determined by door manufacturer.

Drill Pilot Hole for #14 Wood Screw 4 places
Center line of electric strike & latchbolt of lock must align.



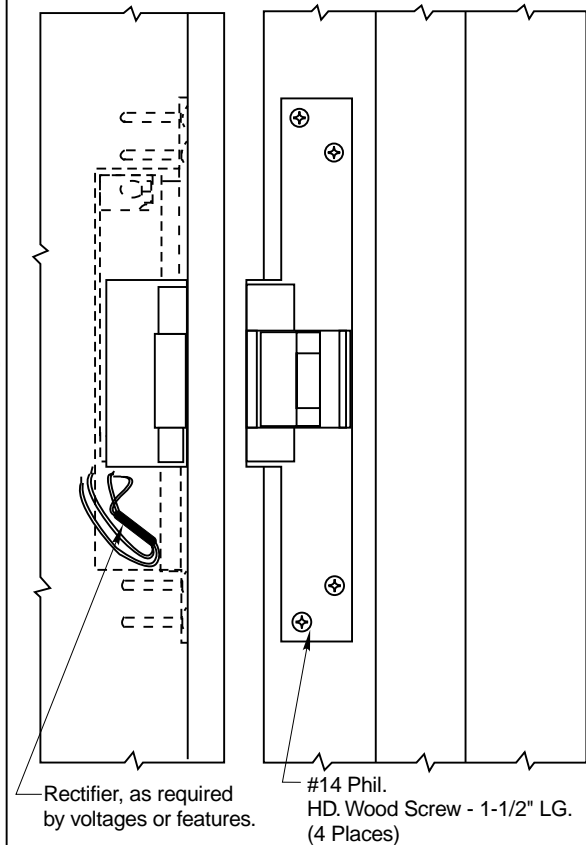
Model 310-2W Electric Strike

Dimension "A" (Keeper Position) is adjustable from .875 to 1.062. To adjust, loosen the two 12-24 Hex HD strike mounting bolts, reposition strike, and retighten bolts.



NOTES:

1. DO NOT SCALE - All dimensions in inches (mm).
2. Dimensions subject to change without notice.
3. Number of wires will vary per features of strike.
4. Cut off all excess wire not req'd for installation.
5. Wires to be run from side & rear of strike to conduit connection.
6. All wiring connections to be made at this end of strike. If a rectifier (optional) is used, it may be installed at either end of strike.
7. Refer to catalog for available finishes, voltages, & optional features.
8. Door & frame manufacturers are responsible for providing adequate construction or reinforcements for proper installation of hardware.
9. Tolerances shown are for cutouts.



**310-2W Electric Strike
Brass**



REF. REPAIR PART DWG.

P.O. BOX 25288, CHARLOTTE, NC 28229-8010

TEMPLATE NUMBER

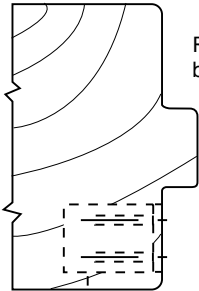
092-0245-039

DATE

9-98

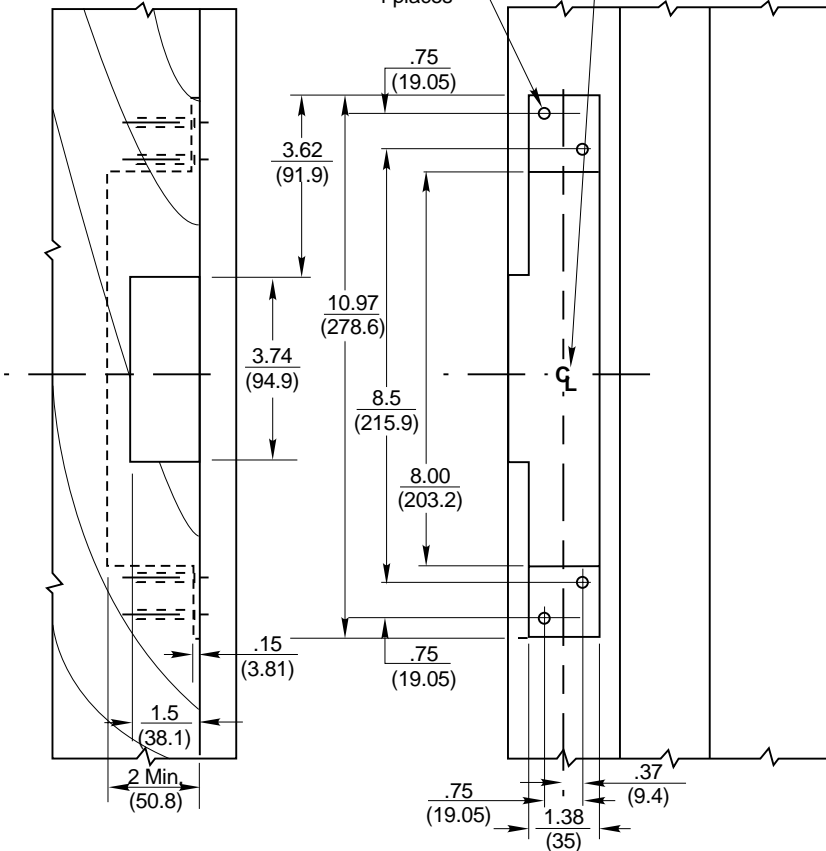
Frame Preparation (RHRB Application Shown)

Drawing shows only one method of installation. Method of installation may vary per door & frame manufacturer.



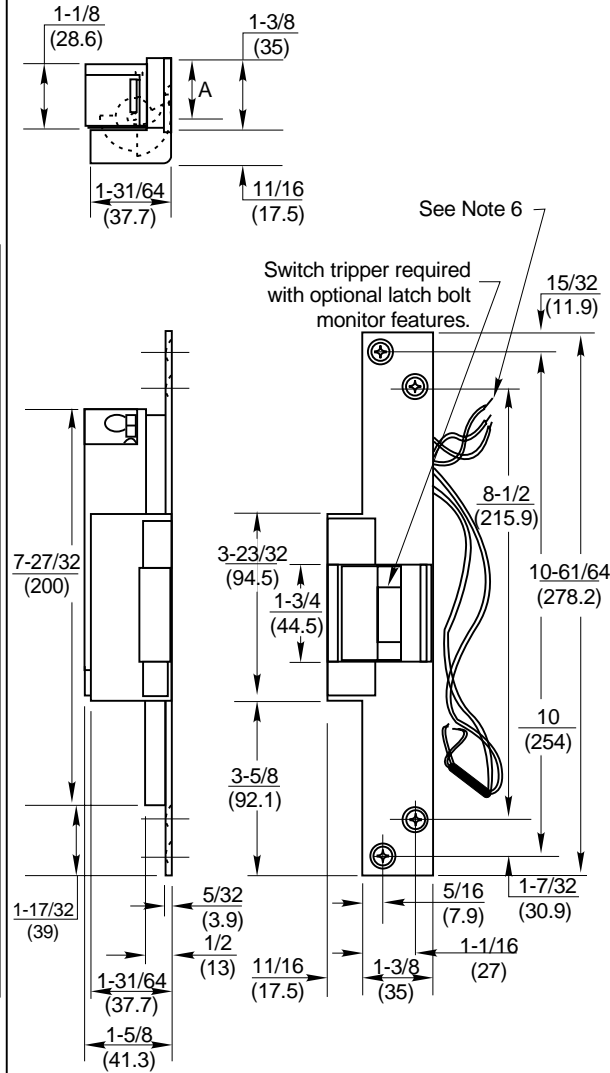
Routing of wires for strike to be determined by door manufacturer.

Drill Pilot Hole for #14 Wood Screw 4 places
Center line of electric strike & latchbolt of lock must align.



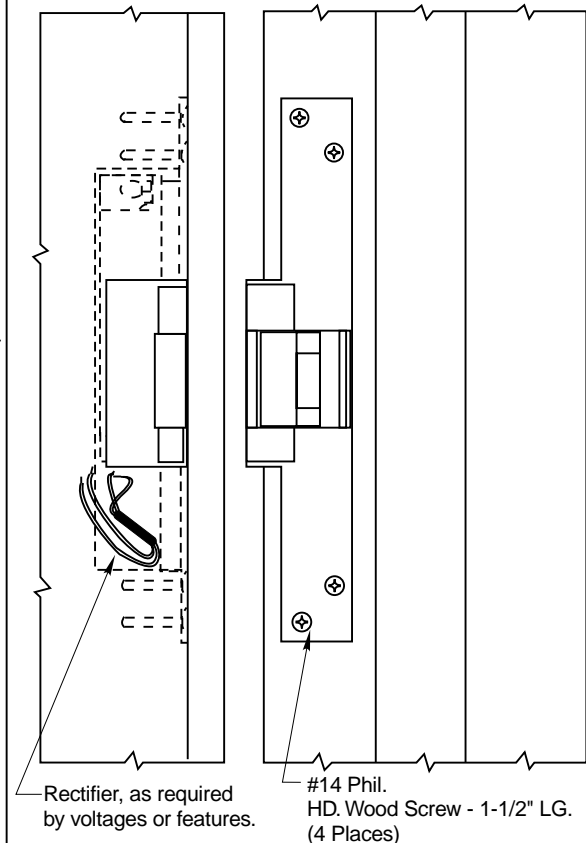
Model 310-2W Electric Strike

Dimension "A" (Keeper Position) is adjustable from .875 to 1.062. To adjust, loosen the two 12-24 Hex HD strike mounting bolts, reposition strike, and retighten bolts.



NOTES:

1. DO NOT SCALE - All dimensions in inches (mm).
2. Dimensions subject to change without notice.
3. Number of wires will vary per features of strike.
4. Cut off all excess wire not req'd for installation.
5. Wires to be run from side & rear of strike to conduit connection.
6. All wiring connections to be made at this end of strike. If a rectifier (optional) is used, it may be installed at either end of strike.
7. Refer to catalog for available finishes, voltages, & optional features.
8. Door & frame manufacturers are responsible for providing adequate construction or reinforcements for proper installation of hardware.
9. Tolerances shown are for cutouts.



**310-2W Electric Strike
Stainless Steel**



REF. REPAIR PART DWG.

P.O. BOX 25288, CHARLOTTE, NC 28229-8010

TEMPLATE NUMBER

092-0245-040

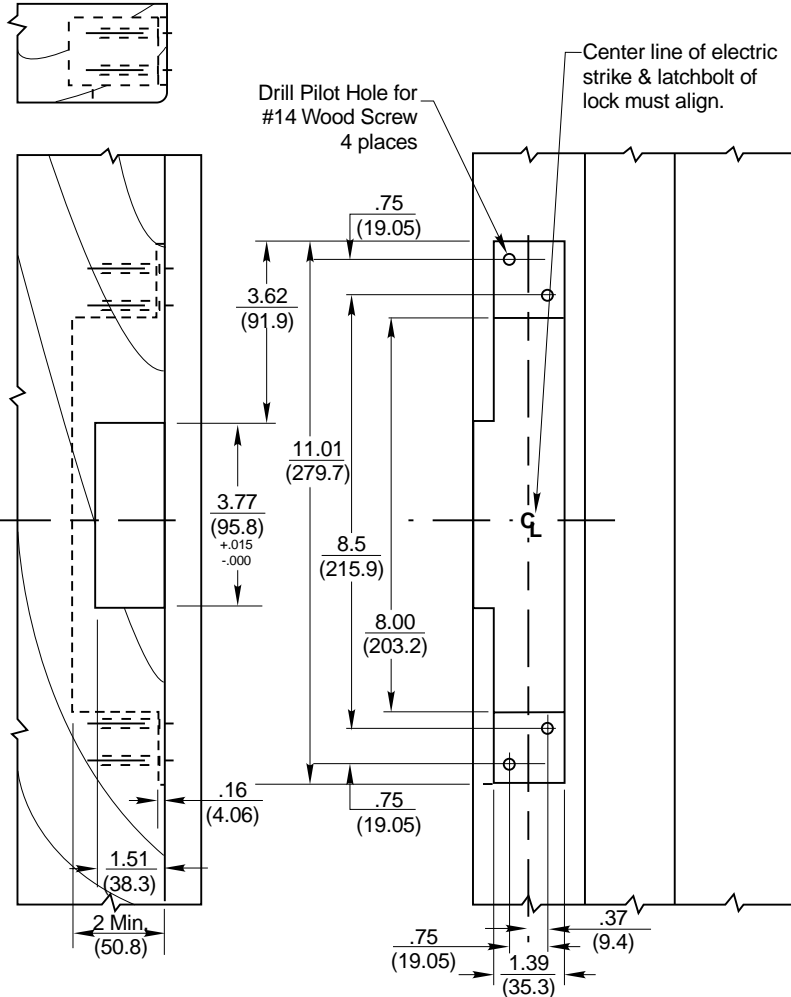
DATE

9-98

Frame Preparation (RHRB Application Shown)

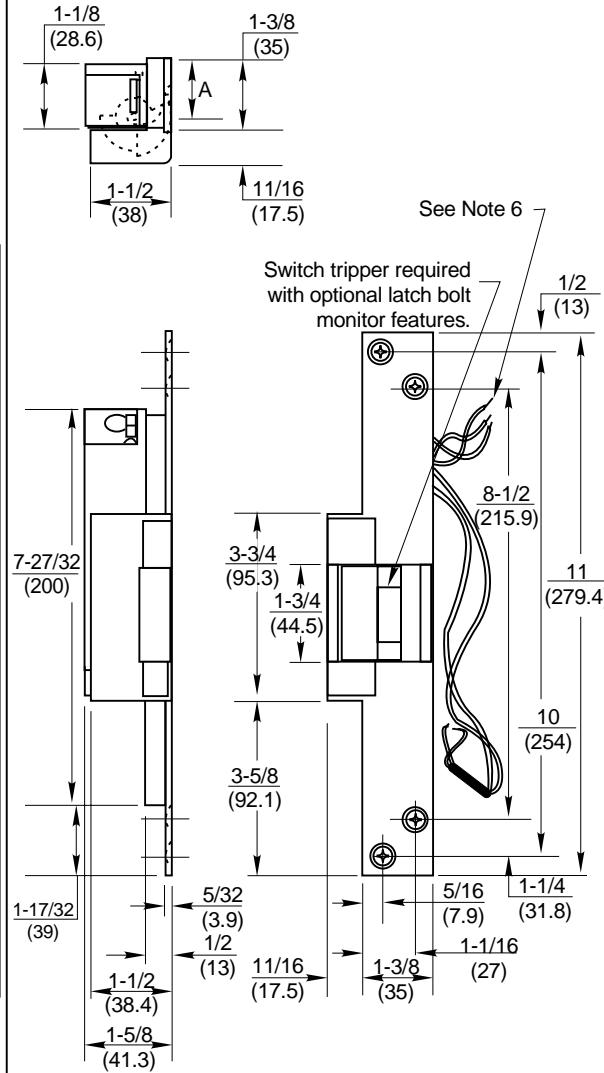
Drawing shows only one method of installation. Method of installation may vary per door & frame manufacturer.

Routing of wires for strike to be determined by door manufacturer.



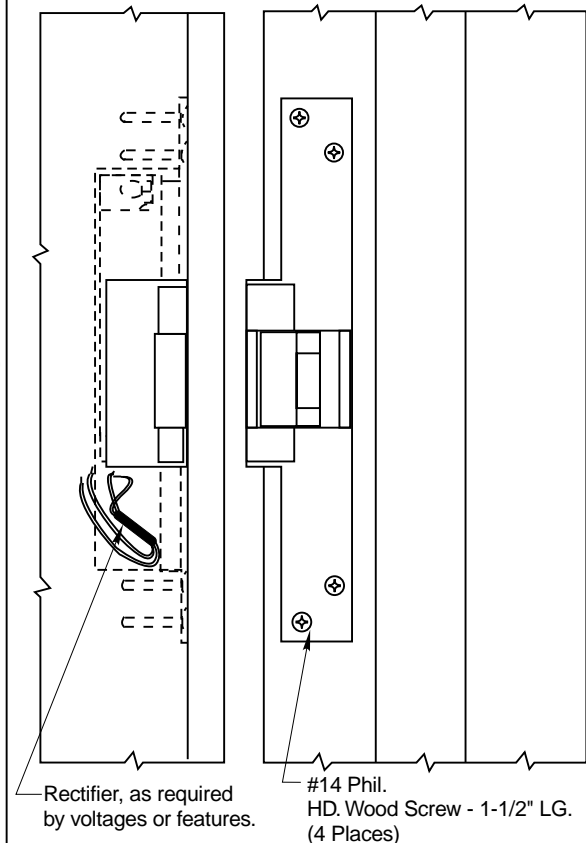
Model 310-2W Electric Strike

Dimension "A" (Keeper Position) is adjustable from .875 to 1.062. To adjust, loosen the two 12-24 Hex HD strike mounting bolts, reposition strike, and retighten bolts.



NOTES:

1. DO NOT SCALE - All dimensions in inches (mm).
2. Dimensions subject to change without notice.
3. Number of wires will vary per features of strike.
4. Cut off all excess wire not req'd for installation.
5. Wires to be run from side & rear of strike to conduit connection.
6. All wiring connections to be made at this end of strike. If a rectifier (optional) is used, it may be installed at either end of strike.
7. Refer to catalog for available finishes, voltages, & optional features.
8. Door & frame manufacturers are responsible for providing adequate construction or reinforcements for proper installation of hardware.
9. Tolerances shown are for cutouts.
10. Requires a Door Coordinator.



310-2W Electric Strike
Brass - Inactive Leaf of A Pair of Doors



REF. REPAIR PART DWG.

P.O. BOX 25288, CHARLOTTE, NC 28229-8010

TEMPLATE NUMBER

092-0245-041

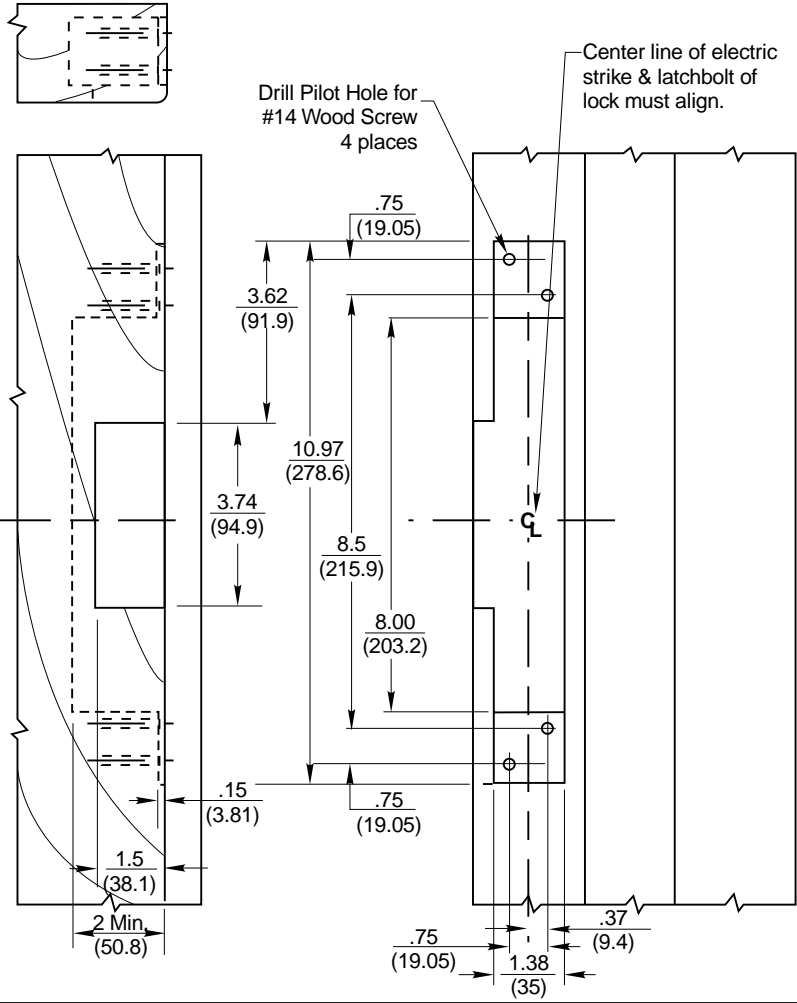
DATE

9-98

Frame Preparation (RHRB Application Shown)

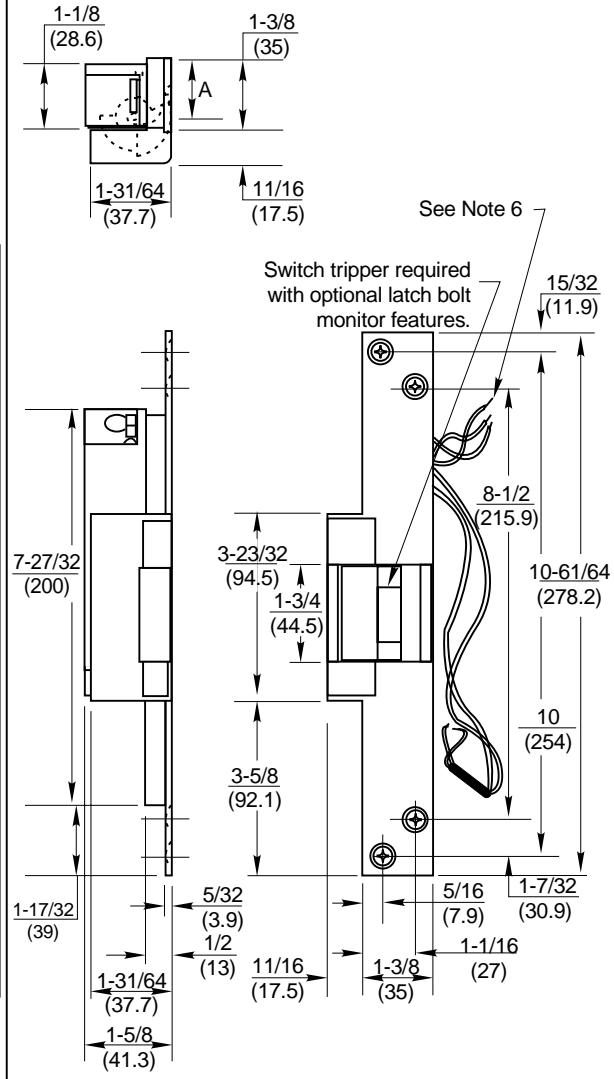
Drawing shows only one method of installation. Method of installation may vary per door & frame manufacturer.

Routing of wires for strike to be determined by door manufacturer.



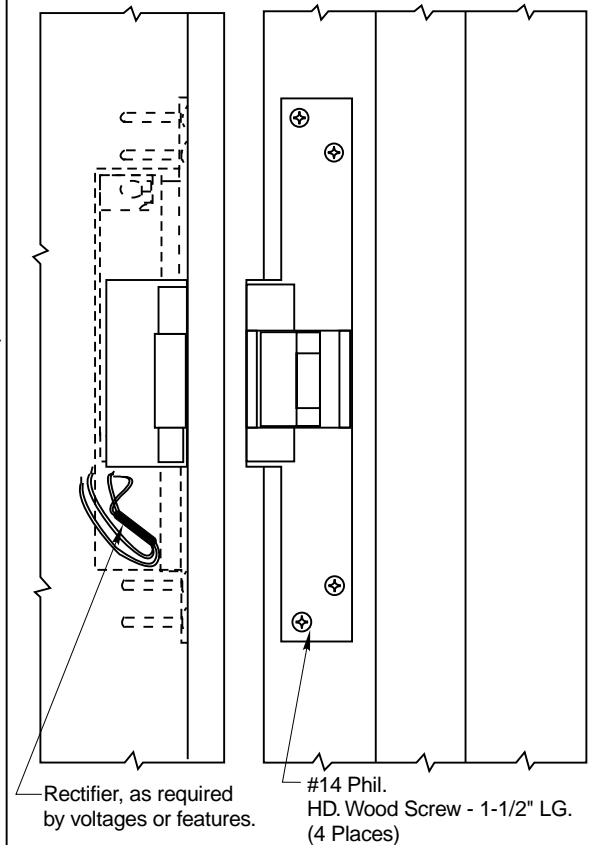
Model 310-2W Electric Strike

Dimension "A" (Keeper Position) is adjustable from .875 to 1.062. To adjust, loosen the two 12-24 Hex HD strike mounting bolts, reposition strike, and retighten bolts.



NOTES:

1. DO NOT SCALE - All dimensions in inches (mm).
2. Dimensions subject to change without notice.
3. Number of wires will vary per features of strike.
4. Cut off all excess wire not req'd for installation.
5. Wires to be run from side & rear of strike to conduit connection.
6. All wiring connections to be made at this end of strike. If a rectifier (optional) is used, it may be installed at either end of strike.
7. Refer to catalog for available finishes, voltages, & optional features.
8. Door & frame manufacturers are responsible for providing adequate construction or reinforcements for proper installation of hardware.
9. Tolerances shown are for cutouts.
10. Requires a Door Coordinator.



310-2W Electric Strike
Stainless Steel - Inactive Leaf of a Pair of Doors



REF. REPAIR PART DWG.

P.O. BOX 25288, CHARLOTTE, NC 28229-8010

TEMPLATE NUMBER

092-0245-042

DATE

9-98