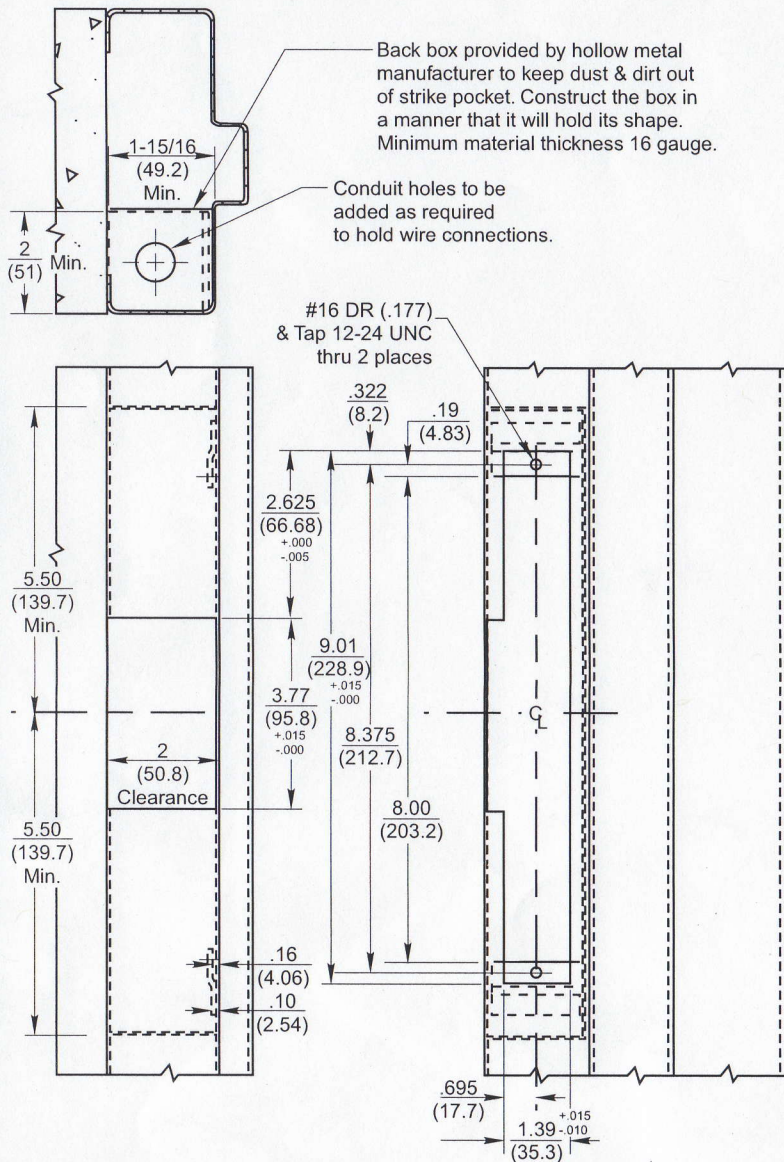
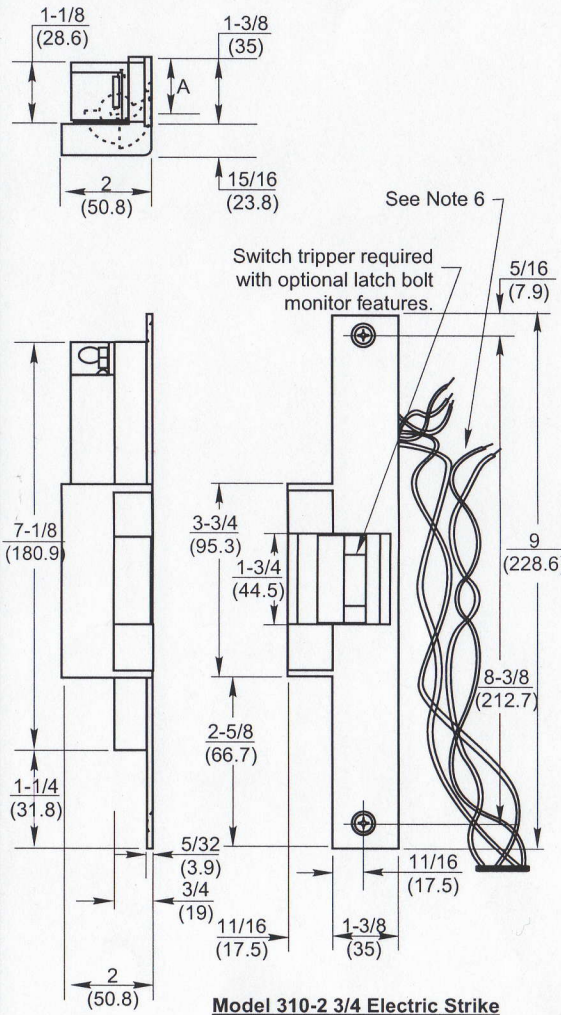


Frame Preparation (RHRB Application Shown)

Drawing shows only one method of installation. Method of installation may vary per door & frame manufacturer.

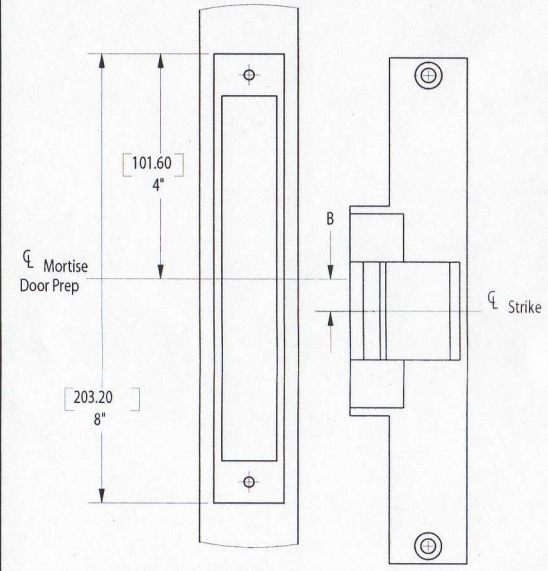


Dimension "A" (Keeper Position) is adjustable from 1.00 to 1.187. To adjust, loosen the two 12-24 Hex HD strike mounting bolts, reposition strike, and retighten bolts.



Model 310-2 3/4 Electric Strike

- NOTES:
- DO NOT SCALE - All dimensions in inches (mm).
 - Dimensions subject to change without notice.
 - Number of wires will vary per features of strike.
 - Cut off all excess wire not req'd for installation.
 - Wires to be run from side & rear of strike to conduit connection.
 - All wiring connections to be made at this end of strike. If a rectifier (optional) is used, it may be installed at either end of strike.
 - Refer to catalog for available finishes, voltages, & optional features.
 - Door & frame manufacturers are responsible for providing adequate construction or reinforcements for proper installation of hardware.
 - Tolerances shown are for cutouts.



MORTISE LOCK	B
CORBIN/RUSSWIN, SARGENT (8200), YALE (8800), ARROW, FALCON	0"
BEST 34H-37H	1/4"
SCHLAGE	3/4"
YALE (8700)	7/8"
BEST 45H & 47H	1/8"

310-2 3/4 Electric Strike

FOLGER ADAM®
ELECTRIC DOOR CONTROLS
www.folgeradamedc.com

REF. REPAIR PART DWG. 245-2340-001

TEMPLATE NUMBER **4811081.001 Rev B** DATE **3-07**